

2024 Study Abroad Student Guide



Creative
thinkers
made here.

Contents

Edith Cowan is an Australian icon	3
Study Abroad at ECU	4
Who is ECU?	5
Why study at ECU?	5
Important Dates in 2024	6
About Study Abroad	7
Life as a student	8
Things to do around Perth and WA	10
Our study areas	12
Undergraduate options	13
Art & Humanities units	13
Business & Law units	14
Engineering units	15
Indigenous Australian units	16
Medical & Health Sciences units	17
Nursing & Midwifery units	18
Science units	18
Teacher Education units	19
WAAPA units	20
Postgraduate Options	21
Art & Humanities units	21
Business & Law units	21
Engineering units	21
Indigenous Australian units	21
Medical & Health Sciences units	22
Nursing & Midwifery units	22
Science units	22
Teacher Education units	22
How to apply	23
Student accommodation	24
Where will you study?	26
Frequently asked questions	27

Edith Cowan is an Australian icon

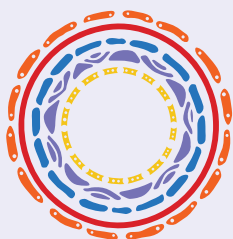
ECU is the only Australian university named after a woman – and what a woman she was!

Edith Cowan (OBE) achieved so much in her life, and in a world that didn't pay attention to the opinions of women.

The first woman elected to an Australian Parliament, Edith believed that education was fundamental to tackling social issues and was the key to growth, change and improvement.

She influenced the course of education in Australia, paving the way for many people to access education they could only previously dream of.

Like our university, Edith also believed strongly in the values of inclusion and equity. She fought hard to improve conditions for women, children, families, the poor, the under-educated and the elderly.



We recognise and respect the significance of Aboriginal and Torres Strait Islander peoples' communities, cultures and histories.

We also acknowledge and respect the Noongar people as the traditional custodians of the land on which our campuses are located.

→ [ecu.edu.au/about-ecu/
indigenous-matters](https://ecu.edu.au/about-ecu/indigenous-matters)



Study Abroad at ECU

A Study Abroad program is the perfect way to expand your global citizenship. Live, work, and study in Australia, immerse yourself in the culture, and develop a deeper understanding of how you can contribute to the world.

From the time you enquire to the time you enrol, our expert staff will guide you. We can help you select your units, submit an application, accept your place and explore what else ECU has to offer so you can make good use of your time abroad.

Students come from all over the world to study with ECU and each has their own unique experience.

You can also chat to some of our current International Student Ambassadors to hear their experience first hand.

➔ [Chat to a Student Ambassador –
ecu.edu.au/degrees/international/ask-a-student](https://ecu.edu.au/degrees/international/ask-a-student)



“At ECU you will make amazing friends, and be provided with opportunities to enhance your future that will leave you with meaningful memories.”

Riley Gullino (USA)
Studied International Business



“In this program, you get the same opportunities as other students to enjoy ECU and to engage in class activity. I believe this amazing experience will help my career.”

Mengdie (Edith) Guo (China)
Studied Accounting and Finance



Who is ECU?

Edith Cowan University, or ECU, is the youngest of the five universities in Western Australia (WA). And like the youngest in any family, we're on a mission to be noticed!

We are rated one of the world's best young universities under 50 years old. And we've already set a standard for the quality of university teaching in Australia, being rated 5 stars in the Good Universities Guide for 17 straight years!

Speaking of high standards, you won't find better support services to help you navigate your studies and adjust to your new home than at ECU. We put our students first.

Here are some more great reasons to choose ECU for your university experience.

Why study at ECU?



Get career ready while you study

During your studies, we'll help you build your personal brand to prepare you for your future career.



Learn with leaders

As a student, you'll benefit from the expertise and industry experience of our world-class researchers and teaching academics.



Become a creative thinker

Problem solving and creative thinking skills are highly valued by employers around the world, and we'll help you make this your **superpower**.



Join our international community

Make new friends with students who've come to Perth from over 95 countries around the world.



Feel right at home on campus

Your uni experience is made even better at one of our safe and welcoming campuses, where you'll have loads of modern facilities and cool study spaces.



Grow your professional network

You'll have opportunities to make new contacts and connections thanks to our many industry partners.



Know you'll be supported

We have a great reputation for student support and will help you adjust to your new life here, whatever your study or personal challenges.



Transferable qualifications

ECU degrees are internationally-recognised and many of our courses are professionally-accredited by national and international professional bodies and organisations.

ECU is one of the best universities in Australia

ECU is now an established Australian leader in the delivery of quality teaching, student support services and the overall experience of our students – both domestic and international (Good Universities Guide).



Highest quality teaching

We're one of Australia's best universities for teaching. For 17 straight years, our graduates have rated the quality of our teaching 5 stars in the Good Universities Guide.



Legendary student support

Studying in another country can be challenging for many people. But at ECU, we help you overcome any academic or personal challenges through our many support services.

We're one of the best universities in Australia for student support – we even have a Student Success Team.



Best overall experience

At ECU, we encourage you to enrich your life with student clubs, sports teams, volunteering opportunities and more. In fact, for the third year in a row, ECU graduates have rated us the top public university in Australia for their overall experience as an undergraduate (QILT SES 2022).

➔ Read more about our reputation for quality education:
ecu.edu.au/about-ecu/welcome-to-ecu/5star-experience



Important Dates in 2024

Semester 1, 2024

Orientation	14 February
Semester Commences	19 February
Mid Semester Break	1–5 April
Study Week	27–31 May
Review and Examination	3–14 June

Semester 2, 2024

Orientation	15–19 July
Semester Commences	22 July
Mid Semester Break	23–27 September
Study Week	28 October–1 November
Review and Examination	4–15 November

Orientation

Orientation happens one week before the start of each semester and it's a great way for new students to adjust to uni life.

You'll get to meet teaching staff and new students, find your way around campus and understand where to go for our many student support services.

Note Semester 2 details correct at time of print and subject to change.



➔ For more details on our application dates, visit ecu.edu.au/future-students/applying/important-dates

What you should know about Study Abroad at ECU

Study Abroad is a fantastic learning abroad experience. We want to make sure you create the best program, so we've outlined three key things you should know.

1

Study Abroad course codes

You can study for up to 2 semesters as a Study Abroad student. The courses are:

- X01 Study Abroad Undergraduate One Semester
- X17 Study Abroad Undergraduate Two Semesters
- X02 Study Abroad Postgraduate One Semester
- X18 Study Abroad Postgraduate Two Semesters

2

Selecting your units

You can choose units from all of our eight Schools to create a unique study program of 3-4 units per semester.

Here is how to select your units:

- Head to pages 13-20 of this guide to check out some popular units
- Search an ECU degree for units that match your interest (e.g. Bachelor of Laws)
- Head to the ECU Handbook and search by keyword to find a unit
www.ecu.edu.au/handbook
- Chat to an ECU Authorised Agent **www.ecu.edu.au/future-students/applying/find-an-authorised-agent** or email ECU Staff **international.partnerships@ecu.edu.au**
- Undergraduate and Postgraduate Study Abroad applicants require an Academic IELTS overall minimum band score of 6.0, with no individual band less than 6.0. Visit the Course Entry page for more information: **ecu.edu.au/future-students/course-entry/english-competency**

3

Tuition fees

In 2024, the Study Abroad tuition fees are split into Group A and Group B:

FEE Group A

Includes hundreds of units from disciplines in arts, business, computing, design, economics, teacher education, humanities, law, mathematics, science (non lab-based), some medical and health science disciplines and social science:

- 45 Credit Points (3 x 15CP units)
Study Abroad fee: \$5,625
- 60 Credit Points (4 x 15CP units)
Study Abroad fee: \$7,500

FEE Group B

Includes a special selection of units in the disciplines of engineering, nursing, medical and health sciences and science (lab-based):

- 45 Credit Points (3 x 15CP units)
Study Abroad fee: \$8,400
- 60 Credit Points (4 x 15CP units)
Study Abroad fee: \$11,200

Use our fees calculator

There may sometimes be variations in pricing for different units given the level of study.

To make sure you have the pricing right, check the tuition fees using our Fees Calculator **apps.ecu.edu.au/fees-calculator**.

Select the year you plan to commence > International Onshore Student > Study Abroad > Search the Study Abroad tuition fee for individual units.



Life as a student

It doesn't matter if you've just left high school or you haven't been a student for a few years, study at uni is a whole new world. The good news is, no matter what your study challenges, we're ready to help you succeed.

Adjusting to study whatever your situation

At ECU, we'll support you through your studies whatever your personal circumstances. This includes if you have a medical condition or disability or have responsibilities for caring for a family member in a similar situation.

It might also include ensuring you can continue to observe any cultural or religious practices.

Our Access and Inclusion team will work with you to identify reasonable adjustments to your study and uni life. They'll also provide ongoing support to you through an individual Learning Access Plan.

Adjusting to academic life

Learning at university can be a bit daunting to begin with, but we've got you covered whatever help you need.

That includes help with preparing assignments, help with researching or referencing, help with online study and loads more. You even get a peer mentor in your first semester!

Career advice and job skills

You can get support and resources to help you plan your future career, as well as find work or volunteering experience while you're a student.

This includes career-based workshops, industry events, one-to-one career advice and more.

Free counselling service

If you need to discuss any personal issues that may be affecting your ability to study, we have a free, professional and confidential psychological counselling service.

Sports and gyms

Being physically active positively stimulates your student brain and helps you reduce the stress of assignment deadlines or exams.

So, it's a good thing that our campuses have terrific sports and gym facilities. You can also join group fitness classes, social sports teams or attend regular healthy activities like yoga classes.

Student health services

The ECU campuses in Joondalup and Mount Lawley have student health centres with doctors (GPs), and nurses to assist you if you need them. The services are covered by Medicare or Overseas Student Health Funds so most visits are free or low cost.



For more information — ecu.edu.au/future-students/ecu-experience





ECU Student Guild

ECU Student Guild is run by students and provides academic, social and financial assistance.

The Guild organises regular social events on campus and supports the many and varied student clubs at ECU. Joining a club is a great way to meet new people and enhance your university experience.

They also run a second-hand bookshop with an excellent range of used textbooks. Best of all, Guild membership is free for all students.



For more information –
ecuguild.org.au



ECU's International Café

Being an international student is an exciting opportunity – you get to build new friendships and amazing international contacts. But it can also be a little overwhelming.

ECU invites international students to come along and share a coffee and afternoon tea, while learning about living and studying in Australia at International Café.

Each week, hear from international students who have been in your shoes. Discover tips for balancing study and life, and other fun information such as the best hidden spots around Perth.

You will also hear from different guest speakers each week about services and activities available to you.

This is a great opportunity to meet other new international students from across the globe and get to know some of your fellow students a little bit better. All over a coffee and bite to eat!



Perth and Western Australia

Things to do



Movies

See a film at one of several open air cinemas, including one on ECU's Joondalup Campus!



Festivals

Visit one of Perth's annual international arts festivals –Fringe World Festival and Perth Festival.



Sightseeing

Visit bustling Elizabeth Quay, enjoy a guided walk in Kings Park and explore the extensive cycle tracks around the Swan River.



Beaches

Explore the stunning beaches and best sunsets in Australia.



Rottnest Island

Take a ferry across to Rottnest Island and take a quokka selfie.



Margaret River

Get away to Margaret River in WA's South West to explore the world-renowned cuisine, wineries, breweries, surf and accommodation.



Why study in Perth, Western Australia?

With a high standard of living, Perth is a vibrant, sophisticated and safe city that is regularly rated among the top cities in the world for liveability.

The mild Mediterranean climate, endless blue skies, fresh air and brilliant white beaches are hard to beat!

In fact, Perth offers such an attractive lifestyle that students consistently rank it as a desirable study destination (Source: QS Best Student Cities 2023).



Cost of living

Perth has been consistently rated as one of the top ten most liveable cities in the world for over 15 years (source: The Global Liveability Index 2021)

Even better, day-to-day living costs in Perth for international students are lower than other major cities in Australia (and worldwide), making it one of the most affordable destinations to study in (source: StudyPerth).



Climate

Perth has a Mediterranean climate with hot, dry summers and mild, wet winters. It is the sunniest capital city in Australia with clear blue skies an incredible 70% of the year!

Our warm weather and clean air allow us to enjoy a year-round outdoor lifestyle as we make the most of our state's natural beauty.



Convenience & transport

Our public transport system is always expanding. Students receive a discount on all public transport, with some services free.

Plus, Perth's city rail network has been rated the best in Australia and Perth rail passengers are the most satisfied in the country (a ranking Transperth has held for seven years!).



Our study areas

At ECU, we group similar fields of work into eight diverse study areas that align with our teaching schools. All of our courses are industry-relevant and internationally-recognised and most are professionally-accredited.

Arts & Humanities

Arts and Humanities at ECU offers great opportunities to become a savvy, problem-solving, future-building advocate, thinker, and maker! Whether in creative humanities, or across a range of psychology and social science offerings, our courses provide excellent career opportunities in the caring and creative professions.



Nursing & Midwifery

ECU produces some of the highest quality nursing and midwifery graduates in Western Australia and is recognised as a top 150 nursing program worldwide. Students have access to state-of-the-art health and wellness facilities, practical placements with a range of health providers and WA's only nursing and midwifery dual degree program.

Science

ECU offers a range of courses in the areas of science, biological and environmental sciences, data science, bioinformatics, computing and security. ECU's research and teaching are world-class, with practical degrees that can lead to a variety of careers in fields such as marine and freshwater biology, conservation and wildlife biology, environmental management, physics, chemistry, mathematics, cyber security and horticulture.

Teacher Education

ECU has been at the forefront of teacher education for over 100 years and has a strong reputation for the quality of its graduates. The experienced academic team are world leaders in tertiary teaching in the area of teacher education and strive to find better ways to prepare quality teachers.



Business & Law

Business and Law at ECU offers an exciting mix of courses and majors that combine the latest theory with practical experience, leading to a diverse choice of careers. Students can expect a practical experience and to learn essential employability skills to help them succeed in a variety of dynamic global business environments.

Engineering & Technology

ECU has been ranked in the top 175 universities in the world for Engineering by the Times Higher Education World University Rankings for 2023. Here, you'll study in some of the best-equipped, industry-grade engineering labs in Australia, with the opportunity to work on real-world projects and develop strong contacts through industry engagements, events and internships. With an ECU engineering degree, you'll graduate able to work globally and capable of meeting the challenges of the future.

Medical & Health Sciences

Medical and Health Sciences offers exciting and diverse areas of study and some of ECU's world-leading research teams. Courses include biomedical science, health science, exercise and sports science, occupational therapy, paramedical science, speech pathology, nutrition and dietetics, and public health.

Western Australian Academy of Performing Arts

The Western Australian Academy of Performing Arts (WAAPA) at ECU is one of the world's leading performing arts academies. WAAPA is recognised nationally and internationally for the quality of its graduates. It provides the most extensive range of performing arts training in Australia – both on stage and behind the scenes.

Undergraduate Options

See below for a list of popular units or visit www.ecu.edu.au/handbook for more options.

Please note unit availability is subject to change.

Arts & Humanities

		SEM 1	SEM 2	FEE GRP
Advertising and Public Relations				
ADV2220	Advertising Management	ML	-	A
ADV3426	Channel Planning	ML	-	A
PRN1000	Foundations of Public Relations	ML	-	A
PRN2225	Media Relations	-	ML	A
PRN3160	Social and Online Media Strategies	-	ML	A
Art and Design				
PHO1125	Camera Work and Lighting	ML	ML	A
TDD1101	Design Drawing	ML	-	A
DES1106	Design Practices: Typography	-	ML	A
GDI1100	Experience Design	ML	-	A
GDI2112	Game Studies	-	ML	A
PHO3125	Photomedia Histories and Narratives	-	ML	A
VIS2130	Spatial Studio	-	ML	A
GDI2100	Web Design	ML	-	A
Communications, Media and Cultural Studies				
SAH2200	Audience Perception and Experience	-	ML	A
SAH1100	Communicating Ideas	ML	-	A
SAH1150	Creativity	ML	-	A
SCR3160	Documentary, Technology and Experience	ML	-	A
CMM1124	Media and Nation	ML	-	A
SPO1050	Screen Histories	ML	-	A
SPO1100	Screen Practice 1: Drama	-	ML	A
SAH1250	Storytelling and Meaning	-	ML	A
Creative Writing, Journalism and Literature				
PHO3201	Photojournalism and Editorial Practice	ML	-	A
ENG2120	Popular Texts for Young People	-	ML	A

Arts & Humanities

		SEM 1	SEM 2	FEE GRP
History and Politics				
POL2105	Australian Government: The Challenges of a Modern Democracy	ML	-	A
HIS1107	Australian History: Colonisation, Nationalism and Identity	ML	-	A
SWK2112	Australian Politics and Policy	-	SW	A
POL1106	Ideas that have Shaped the Modern World	-	ML	A
HIS3180	Modern China: The Rise of a Superpower	-	ML	A
Counselling, Criminology and Psychology				
PSY1210	Biopsychology, Sensation and Perception	-	JO	A
SWK2114	Community Health and Well-being	-	SW	A
CRI1103	Criminology	JO	-	A
COU1101	Dynamic Models of Counselling	JO	-	A
CSV1103	Interpersonal and Helping Skills	JO	-	A
PSY1101	Introduction to Psychology	JO	JO	A
CSV1102	Introduction to Social Analysis	-	JO	A
YWK1101	Principles of Youth Work	-	JO	A
CRI2115	Psychology and Criminal Justice	JO	-	A
PSY1115	Psychology of Motivation and Emotion	JO	-	A
COU1102	Self Development 1	-	JO	A
CRI1107	The Criminal Justice Process	JO	-	A
CRI1104	The Psychology of Criminal Behaviour	-	JO	A
COU1201	Therapeutic Practice with Families and Couples	JO	-	A
CSV1203	Working with Groups	-	JO	A
YWK1220	Youth Issues	JO	-	A

Campus key

JO Available at the Joondalup Campus

ML Available at the Mount Lawley Campus

SW Available at ECU South West, Bunbury

* This unit has a prerequisite and is subject to ECU approval.

Additional units, as well as detailed information on unit content, credit points and learning outcomes are published online in the ECU Handbook: ecu.edu.au/handbook

Business & Law

		SEM 1	SEM 2	FEE GRP
Accounting and Finance				
SBL1200	Accounting and Finance Essentials	JO	JO	A
ACC3201	Accounting Information Systems*	JO	JO	A
ECF1120	Finance I	JO	JO	A
ACC2700	Financial Reporting Standards*	JO	SW JO	A
Business Identity				
SBL1500	Ethics and Responsibility in Business	-	JO	A
SBL1800	Work and Career	JO	JO	A
SBL2100	Cultural Business Intelligence	JO	-	A
Digital Marketing				
MKT2805	Social Media Marketing	JO	JO	A
MKT3820	Marketing Analytics	JO	JO	A
MKT2700	Retail Marketing	JO	JO	A
Global Sport Business				
SPM2510	Marketing in Global Sport Business	-	JO	A
SPM3114	Sport Venues and Events	-	JO	A
SPM2111	Sport Organisation Management	-	JO	A
Hospitality				
HOS2110	Food and Beverage Management	JO	-	A
HOS2325	Managing the Service Experience	-	JO	A
HOS2220	Rooms Division Management	JO	-	A
TSM3101	International Resort Management	JO	-	A
International Business				
INB3600	Business in Asia	JO	-	A
INB2102	International Business	JO	-	A
INB3303	Global Trade	-	JO	A
Law and Legal Studies				
LAW2108	Workplace Laws and Regulation	JO	-	A
LAW2106	Intellectual Property Law	JO	-	A
LAW1100	Introduction to Business Law	JO	JO	A
SPM3113	Sport and Leisure Law*	JO	-	A

Business & Law

		SEM 1	SEM 2	FEE GRP
Management and HRM				
MAN2145	Human Resource Management	JO	JO	A
MAN3121	Leadership	JO	JO	A
MAN3313	Future of Work	-	JO	A
Marketing				
MKT2608	Consumer Behaviour	JO	JO	A
MKT2700	Retail Marketing	-	JO	A
MKT3820	Marketing Analytics	JO	JO	A
MKT2605	Promotional Marketing	JO	JO	A
Project Management				
MAN3612	Project Management	JO	-	A
MAN2170	Starting up a Project	JO	JO	A
Sport Business and Event Management				
TSM2202	Introduction to Event Management	JO	JO	A
SPM3655	Sport and Events Funding and Finance	JO	-	A
SPM1102	Sport and Recreation Leadership and Programming	JO	-	A
TSM3501	Event Operations Management	-	JO	A
SPM3114	Sport Venues and Events	-	JO	A
Sustainability				
MAN1100	Management	JO	JO	A
SBL1500	Ethics and Responsibility in Business	JO	JO	A
MAN2610	Managing for Sustainability	JO	JO	A
Tourism				
TSM2111	Introduction to Hospitality and Tourism	JO	-	A
TSM2650	Travel, Destination and Visitor Management	-	JO	A
TSM3610	Sustainable Tourism Development	-	JO	A
HOS3100	Hospitality and Tourism Management	JO	-	A

Campus key

JO Available at the Joondalup Campus

ML Available at the Mount Lawley Campus

SW Available at ECU South West, Bunbury

* This unit has a prerequisite and is subject to ECU approval.

Additional units, as well as detailed information on unit content, credit points and learning outcomes are published online in the ECU Handbook: ecu.edu.au/handbook

Engineering

		SEM 1	SEM 2	FEE GRP
Aviation				
SCA1125	Fundamentals of Flight*	JO	-	B
SCA1117	Human Factors in Aviation*	-	JO	B
Chemical Engineering				
ENS3111	Chemical Thermodynamics*	-	JO	B
ENS5561	Minerals and Solids Processing*	JO	-	B
ENS3113	Reaction Engineering*	-	JO	B
Civil, Civil and Environmental Engineering				
ENS5112	Construction Site Management*	-	JO	A
ENS5252	Construction Technology*	JO	-	B
ENS5161	Environmental and Process Risk Management*	JO	-	B
ENM3218	Fluid Mechanics*	JO	-	B
ENS3190	Mechanics of Solids*	-	JO	B
ENS3242	Soil Mechanics and Foundation Engineering*	JO	-	B
ENS2260	Surveying and Site Measurement*	JO	-	A
ENS5214	Transportation Engineering*	JO	-	B
Computer Systems				
ENS2344	Computer Architecture*	-	JO	B
ENS2456	Digital Electronics*	JO	-	B
ENS5251	Digital Signal Processing*	-	JO	B
ENS2257	Microprocessor Systems*	-	JO	B
ENS5191	Electrical Engineering Design*	-	JO	B
ENS5204	Real-time Embedded Systems*	-	JO	B
Electrical and Renewable Energy Engineering				
ENS3551	Electrical Networks*	JO	-	B
ENS5360	Power Electronics*	JO	-	B
ENS5562	Renewable Energy Conversions 1*	JO	-	B
ENS5191	Electrical Engineering Design*	-	JO	B
ENS3553	Signals and Systems*	-	JO	B
ENS5445	Sustainability and Renewable Energy*	-	JO	B

Engineering

		SEM 1	SEM 2	FEE GRP
Electrical Power				
ENS2457	Analog Electronics*	-	JO	B
ENS5253	Control Systems*	JO	-	B
ENS2456	Digital Electronics*	JO	-	B
ENS5360	Power Electronics*	JO	-	B
ENS5191	Electrical Engineering Design*	-	JO	B
ENS3206	Power Systems 1*	-	JO	B
ENS3553	Signals and Systems*	-	JO	B
Instrumentation Control and Automation/Electronics and Communications Engineering				
ENS2457	Analog Electronics*	-	JO	B
ENS5253	Control Systems*	JO	-	B
ENS3554	Data Communications and Computer Networks*	JO	-	A
ENS2456	Digital Electronics*	JO	-	B
ENS5191	Electrical Engineering Design*	-	JO	B
ENS2257	Microprocessor Systems*	-	JO	B
ENS5447	Propagation and Antennas*	JO	-	B
ENS3553	Signals and Systems*	-	JO	B
ENS3556	Wireless Communication*	-	JO	B
Mechanical Engineering				
ENS3212	Electrical Machines and Transformers*	-	JO	B
ENS1115	Materials and Manufacturing 1*	JO	-	B
ENS3105	Mechanical Design and Development*	JO	-	B
ENS2170	Principles of Industrial Maintenance*	JO	-	B
ENS2160	Thermodynamics*	-	JO	B
Mechatronics Engineering				
ENS2456	Digital Electronics*	JO	-	B
ENM2104	Instrumentation and Measurement*	JO	-	B
ENS2257	Microprocessor Systems*	-	JO	B
ENS5442	Robotics 1*	JO	-	A
ENS3553	Signals and Systems*	-	JO	B

Campus key

JO Available at the Joondalup Campus

ML Available at the Mount Lawley Campus

SW Available at ECU South West, Bunbury

* This unit has a prerequisite and is subject to ECU approval.

Additional units, as well as detailed information on unit content, credit points and learning outcomes are published online in the ECU Handbook: ecu.edu.au/handbook

Engineering

		SEM 1	SEM 2	FEE GRP
Petroleum Engineering				
ENS5162	Drilling Engineering*	-	JO	B
ENS3125	Petroleum Geology*	-	JO	B
ENS2115	Process Engineering Fundamentals*	JO	-	B
ENS2270	Reservoir Petrophysics and Formation Evaluation*	JO	-	B
ENS3301	Reservoir Thermodynamics and Fluid Properties*	JO	-	B
ENS5564	Unconventional Oil and Gas Resources*	JO	-	B
Motorsports				
ENS5216	Advanced Thermofluids*	-	JO	B
ENS3212	Electrical Machines and Transformers*	-	JO	B
ENS3105	Mechanical Design and Development*	JO	-	B
ENM2209	Race Car Systems*	JO	-	B

Indigenous Australian Studies

		SEM 1	SEM 2	FEE GRP
Indigenous Studies				
ACS4133	Aboriginal Communities*	JO	-	A
EDF3200	Aboriginal Contexts in Early Childhood Education*	-	JO ML	A
EDF3202	Aboriginal Contexts in Primary Education*	SW JO ML	-	A
EDF3203	Aboriginal Contexts in Secondary Education*	ML	ML	A
SWK2111	Aboriginal Histories of the Present*	SW	-	A
SCH1101	Cultural Studies*	JO	JO	A
IAS3110	Indigenous Australians, Cultural Competence and Speech Pathology*		JO	A
IAS3100	Indigenous Health*	JO	JO	A



“Facilities like the Student Hub helped me a lot in the beginning as it was really well organised and helpful. The campus is great, ECU has a very well-developed studying environment.”

Marius Pischke (Germany)
Studied Environmental and Process Engineering



Campus key

JO Available at the Joondalup Campus

ML Available at the Mount Lawley Campus

SW Available at ECU South West, Bunbury

* This unit has a prerequisite and is subject to ECU approval.

Additional units, as well as detailed information on unit content, credit points and learning outcomes are published online in the ECU Handbook: ecu.edu.au/handbook

Medical & Health Sciences

		SEM 1	SEM 2	FEE GRP
Exercise and Sports Science				
SPS1840	Biomechanics and Skill Acquisition	-	JO	A
SPS1755	Coaching Science 2- Badminton and Soccer	JO	-	A
SPS2750	Coaching Science 3- Aquatics and Athletics	JO	-	A
SPS1111	Foundations of Fitness and Training	-	JO	A
SPS1109	Fundamentals of Football Coaching	JO	-	A
SPS3604	Human Movement- Participation and Inclusion	-	JO	A
SPS2516	Motor Learning and Control	-	JO	A
SPS3530	Principles and Practices of Coaching	-	JO	A
SPS2622	Psychology of Sport, Exercise and Health	-	JO	A
SPS2615	Sports Injury Prevention and Management	JO	-	A
SPS3120	Psycho-social Aspects in Physical Activity and Chronic Disease	JO	-	A
Health Promotion, Nutrition and Addiction Studies				
ADS1151	Addiction Studies: Fundamental Concepts	JO	JO	A
HST3100	Child and Adolescent Health	SW JO	-	A
HST2120	Community Development in Health Promotion	JO	-	A
NUT1111	Food and Nutrients	-	SW JO	A
NUT2211	Metabolic Biochemistry*	-	JO	B
HST2124	Health Communication	JO	-	A
HST2220	Health Promotion Planning and Administration	-	JO	A
HST1183	Health, Society and Sustainability	-	SW JO	A
HST3101	Healthy Ageing	-	JO	A
NUT1121	Human Nutrition	SW JO	JO	A
HST1120	Introduction to Health Promotion	JO	-	A
NUT1112	Nutrition and Public Health	JO	SW	A
HST1111	Population Health	SW JO	JO	A
HST1109	Epidemiology	JO	SW JO	A

Medical & Health Sciences

		SEM 1	SEM 2	FEE GRP
Medical and Biomedical				
MMS3115	Histopathology and Applied Histotechniques*	-	JO	B
SCH1132	Human Evolution and Ecology	-	JO	B
MMS2200	Introduction to Histology and Histotechniques	JO	-	B
SPS1530	Lifespan Growth and Development	JO	-	B
Occupational Health and Safety				
HST1152	Introduction to Occupational Health and Safety	JO	-	A
HST2258	Occupational Hygiene and Toxicology	-	SW	A
Paramedical Science				
PSP3101	Advanced Paramedical Practice 1*	JO	-	A
PSP3103	Advanced Paramedical Practice 2*	-	JO	A
PSP1108	Clinical Skills for Paramedical Practice 1*	-	JO	A
PSP2103	Clinical Skills for Paramedical Practice 2*	-	JO	A
PST2235	Medical Studies for Paramedics 1*	JO	-	A
PST2210	Medical Studies for Paramedics 2*	-	JO	A
PST1107	Perspectives in Paramedic Professional Practice	JO	-	A
PST3210	Pre Hospital Perspectives in Emergency Management*	-	JO	A
PST2102	Trauma Studies for Paramedics*	JO	-	A

Campus key

JO Available at the Joondalup Campus

ML Available at the Mount Lawley Campus

SW Available at ECU South West, Bunbury

* This unit has a prerequisite and is subject to ECU approval.

Additional units, as well as detailed information on unit content, credit points and learning outcomes are published online in the ECU Handbook: ecu.edu.au/handbook

Nursing & Midwifery

		SEM 1	SEM 2	FEE GRP
Nursing				
NUM1102	Communication Skills for Nurses and Midwives*	SW	JO	B
NUM2307	Mental Health and Wellbeing in Clinical Practice 1*	SW	JO	B

Science

		SEM 1	SEM 2	FEE GRP
Biology and Environmental Science				
SCI2123	Astronomy	-	JO	B
SCI2118	Australian Biota	-	SW JO	B
SCI1182	Case Studies in Science	-	JO	B
SCI1185	Ecology	-	SW JO	B
SCI1187	Form and Function in Biology	SW JO	-	B
SCM2104	Geographical Information Systems	-	SW JO	B
GEO1150	Geography and Environment: People, Pattern, Process	JO	-	A
SCI1193	Introduction to Environmental Science	JO	-	B
SCI1001	Introduction to Sustainability	JO	-	A
SCI1183	Origins and Evolution of Life	-	SW JO	B
SCI1192	Physical Environments	-	SW JO	B
SCI1125	Professional Science Essentials	SW JO	JO	B
Chemistry				
SCC1123	Chemistry for the Life Sciences	SW JO	-	B
SCC1111	General Chemistry*	JO	-	B

Science

		SEM 1	SEM 2	FEE GRP
Mathematics and Physics				
MAT1108	Foundations of Mathematics	-	JO	A
SCP1111	Physics of Motion*	JO	-	B
SCP1112	Waves and Electricity*	-	JO	B
SCP1134	Foundations of Physics	-	JO	B
SCP1132	Introduction to Physics	JO	-	B
MAT1137	Introductory Applied Mathematics*	JO	JO	A
MAT1114	Introductory Statistics	SW	JO	A
MAT1252	Mathematics for Computing	JO	JO	A
MAT1250	Mathematics 1*	JO	JO	A
MAT1251	Mathematics 2*	-	JO	A
MAT2107	Statistical Research Methods	-	JO	A
Security and Computing				
CSG1105	Applied Communications	JO	JO	A
SCY2120	Applied Intelligence	-	JO	A
SCY1108	Building Management Systems	-	JO	A
CSI1101	Computer Security	JO	JO	A
SCY3506	Counter Intelligence	-	JO	A
SCY2112	Counterterrorism	-	JO	A
CSI2102	Information Security	-	JO	A
SCY3107	Intelligence Analysis	JO	-	A
SCY1117	Intelligence Foundations	JO	-	A
CSP2108	Introduction to Mobile Applications Development	-	JO	A
CSP1150	Programming Principles	JO	JO	A
SCY3508	Radicalism and Political Extremism	JO	-	A
SCY2108	Security Control Systems	JO	-	A
SCY1118	Security Foundations	JO	-	A
SCY2109	Surveillance Systems	JO	-	A
SCY2107	Threat Detection Systems	-	JO	A
CSI1241	Systems Analysis	JO	JO	A
CSG1207	Systems and Database Design	JO	JO	A
CSG2132	Enterprise Data	JO	-	A
CSP2101	Scripting Languages	JO	-	A

Campus key

JO Available at the Joondalup Campus

ML Available at the Mount Lawley Campus

SW Available at ECU South West, Bunbury

* This unit has a prerequisite and is subject to ECU approval.

Additional units, as well as detailed information on unit content, credit points and learning outcomes are published online in the ECU Handbook: ecu.edu.au/handbook

Teacher Education

		SEM 1	SEM 2	FEE GRP
Early Childhood Education				
ECS2260	Assessing and Evaluating Young Children's Learning*	-	SW JO ML	A
AED1240	Drama Arts in Early Childhood Education*	SW JO	-	A
ECM2260	Early Childhood Mathematics 1	SW JO	-	A
SCE2240	Early Childhood Science and Technology Education*	SW JO ML	-	A
HPE2260	Health and Physical Education for Young Children	-	JO ML	A
ECS1250	Learning and Learners	SW JO	-	A
ECS1245	Play and Pedagogy*	-	SW JO	A
SSE3260	Social Science Education in Early Childhood*	JO ML	-	A
ECS1265	Young Children's Learning and Development	-	JO	A



Teacher Education

		SEM 1	SEM 2	FEE GRP
Primary Education				
LIT4260	Children's Literature in the Classroom*	-	JO ML	A
LAN2240	English in the Early Years of Primary School*	SW JO ML	-	A
MAE1250	Foundations of Primary Mathematics*	SW JO ML	-	A
HSS2240	Humanities and Social Science in Primary Schools 1*	SW JO ML	-	A
EDS3240	Including Children with Special Educational Needs*	SW JO ML	-	A
EDU4271	Managing the Behaviour of Students with Special Educational Needs*	SW JO	ML	A
EDU2260	Positive Learning Environments*	-	SW JO ML	A
LAN4131	Teaching Reading in the Primary Classroom*	JO	ML	A
SCE4270	Teaching Integrated Science in Junior Primary Years*	ML	-	A
Secondary Education				
EDU2231	Creating Positive Learning Environments*	-	JO ML	A
DTE2110	Design and Technology Education 1	ML	-	A
MUE4105	Directing School Music Ensembles*	-	ML	A
EDU3104	Diversity in the Secondary Classroom	JO ML	-	A
HPE2112	Physical Activity, Body, Culture and Identity	-	JO	A
CSE3152	Teaching Introductory Computer Programming*	-	ML	A
DSE2210	Teaching Senior School Drama*	-	ML	A
HPE3101	Teaching Secondary Health Education	JO	-	A
HSS2130	Teaching and Learning in Humanities and Social Sciences	ML SW	-	A
MSE2101	Teaching Lower Secondary Mathematics	JO	-	A

Campus key

JO Available at the Joondalup Campus

ML Available at the Mount Lawley Campus

SW Available at ECU South West, Bunbury

* This unit has a prerequisite and is subject to ECU approval.

Additional units, as well as detailed information on unit content, credit points and learning outcomes are published online in the ECU Handbook: ecu.edu.au/handbook

WAAPA

		SEM 1	SEM 2	FEE GRP
Dance				
DAN3903	Contemporary 3*	ML	ML	A
DAN3902	Performance 3*	ML	ML	A
DAN3904	Related Physical Disciplines 3*	ML	ML	A
DAN3906	Special Topics*	ML	ML	A
Drama, Theatre and Arts				
ADM2600	Arts Organisations Management*	ML	-	A
PAM2016	Arts Management*	-	ML	A
BPA2110	Australian Theatre*	-	ML	A
ADM1605	Creating the Arts in the Contemporary World*	ML	-	A
BPA3545	Creativity and Collaboration in the Performing Arts*	ML	ML	A
DAN2425	Cultural Perspectives 2*	-	ML	A
PAM2121	Playwriting Workshop 1*	ML	-	A
BPA2006	Site Specific, Participatory and Immersive Performance*	ML	-	A
PAM3104	Stage Combat*	ML	ML	A
PAD3103	Theory and Practice of Contemporary Performance*	ML	ML	A
PAM2103	Theory of Directing*	ML	ML	A
BPA3205	Workplace Integrated Learning: Project Exegesis*	ML	ML	A
BPA3115	Workplace Integrated Learning: Written Project Proposal*	ML	ML	A

WAAPA

		SEM 1	SEM 2	FEE GRP
Music				
MUS2526	Classic Ensemble 3*	ML	-	A
MUS1563	Classic Musicianship 1*	ML	-	A
MUS1341	Ensemble Studies 1*	ML	-	A
MUS1342	Ensemble Studies 2*	-	ML	A
MUS1381	Jazz and Contemporary Musicianship 1*	ML	-	A
MUS1390	Music History: Chasin' the Trane - Modern Jazz Takes Hold*	-	ML	A
MUS2614	Music History: Electronic Music Overview*	-	ML	A
MUS4608	Music History: Film & Media*	ML	-	A
MUS1490	Music History: Stax, Motown and All Things Soul*	-	ML	A
MUS1140	Music of Our Time: The Australian Musical Landscape*	ML	-	A
MUS2619	Sound Recording*	ML	-	A



Campus key

JO Available at the Joondalup Campus

ML Available at the Mount Lawley Campus

SW Available at ECU South West, Bunbury

* This unit has a prerequisite and is subject to ECU approval.

Additional units, as well as detailed information on unit content, credit points and learning outcomes are published online in the ECU Handbook: ecu.edu.au/handbook

Postgraduate Options

See below for a list of popular units or visit www.ecu.edu.au/handbook for more options.

Please note unit availability is subject to change.

		SEM 1	SEM 2	FEE GRP
Arts & Humanities				
CMM5170	Advertising and Brand Awareness	ML	ML	A
DES5102	Design Thinking	-	ML	A
CMM5110	Globalisation, Cultural Diversity and Innovation	ML	-	A
CMM5165	Media and Society in a Globalised World	ML	ML	A
CMM6150	Media and Transnational Asia	-	ML	A
CMM5180	Public Relations Strategies	-	ML	A
VIS5110	Visual Communication	ML	-	A
DES5310	What is Design For?	ML	-	A

Business & Law				
ACC6010	Accounting Concepts and Applications	JO	JO	A
MKT5325	Applied Digital Marketing	JO	JO	A
FBL6530	Business Events Management	-	JO	A
ECF6115	Financial Markets and Institutions	JO	-	A
HOS6504	Global Hospitality Operations Management	JO	JO	A
MAN6708	Managing Employment Relations	JO	JO	A
MAN5401	Managing Project Scope and Stakeholders	JO	JO	A
MKT6304	New Product Development	JO	JO	A
LAW6501	Principles of Contract and Corporate Law in Business	JO	JO	A
MAN6301	Project Risk Management	JO	-	A

		SEM 1	SEM 2	FEE GRP
Engineering				
ENS5543	Engineering Management*	-	JO	A
ENS6144	Engineering Geology and Rock Mechanics	-	JO	B
ENS5240	Industrial Control*	-	JO	B
ENS6146	Instrumentation and Measurement*	JO	-	B
ENS6138	Principles of Industrial Maintenance*	JO	-	B

Indigenous Australian Studies				
EDF6201	Aboriginal Contexts in Early Childhood Education*	-	ML	A
EDF6202	Aboriginal Contexts in Primary Education*	SW ML	-	A
EDF6203	Aboriginal Contexts in Secondary Education*	ML	-	A



Campus key

JO Available at the Joondalup Campus

ML Available at the Mount Lawley Campus

SW Available at ECU South West, Bunbury

* This unit has a prerequisite and is subject to ECU approval.

Additional units, as well as detailed information on unit content, credit points and learning outcomes are published online in the ECU Handbook: ecu.edu.au/handbook

		SEM 1	SEM 2	FEE GRP
Medical & Health Sciences				
PST5110	Advanced Cardiac Studies	JO	-	B
PST5111	Advanced Medical Studies	JO	-	B
PST5107	Advanced Obstetrics for Paramedics	JO	JO	B
HST6355	Ageing Health and Wellbeing	JO	-	A
SCH6245	Clinical Bioinformatics	-	JO	A
HST6337	Communicable Disease	JO	-	A
PST5200	Extended Care Paramedicine 1	JO	-	B
PST5214	Extended Care Paramedicine 2	JO	-	B
PST6206	Extended Care Paramedicine 3	JO	JO	B
OHS6205	Health, Safety and Workplace Environment	JO	-	A
SCH6234	Molecular Biology and Genomics	-	JO	A
PST6113	Paediatrics for Critical Care Paramedics	-	JO	B
HST6338	Public Health Law and Ethics	-	JO	A
HST5161	Public Health: Philosophy, Principles and Practice	JO	JO	A
HST6510	Public Health Planning and Evaluation	-	JO	A
PST6105	Retrieval Medicine	JO	JO	B

Nursing & Midwifery

PSR5101	Managing Risk in the Clinical Environment*	JO	-	B
NUR6118	Nursing in the Context of Global Health*	-	JO	B
NUR6117	The Deteriorating Patient*	JO	-	B

		SEM 1	SEM 2	FEE GRP
Science				
SCP5320	Advances in Physics 1	JO	JO	B
SCP5323	Advances in Physics 2	JO	JO	B
MAT5212	Biostatistics	JO	JO	A
SCI6150	Biological Databases and Data Mining	-	JO	B
SCI6100	Environmental Monitoring and Investigation	JO	JO	B
SCI6105	Geographical Information Systems and Remote Sensing	JO	-	B
SCI6152	Mass Spectrometry in Systems Biology	-	JO	B
MAT6105	Mathematical Fundamentals	-	JO	A
CSI6202	Network Security	-	JO	A
CSI6201	Networking Technologies	JO	JO	A
CSI6208	Programming Principles	JO	JO	A
CSI6203	Scripting Languages	JO	JO	A

Teacher Education

EDU6170	Assessment in Education: Policies, Pedagogy and Equity	-	ML	A
ECE6150	Contemporary and Comparative Perspectives in Early Childhood Education*	-	ML	A
AED6150	Dance, Drama and Media Arts Education in Early Childhood*	-	ML	A
EDU6373	Foundation Studies and Current Issues in Special Education	ML	-	A
ECE6145	Inclusive Early Childhood Environments	ML	-	A
ECE6140	Investigating Young Children's Holistic Learning and Development*	JO	-	A
EDU6120	Literacy and Numeracy in Teaching and Learning*	ML	-	A
EDU6160	Leading Education in a Global Context*	ML	-	A
MSC6110	Mathematics and Technologies for Young Children*	JO	-	A
SCE6120	Science for Young Children*	-	JO	A

Campus key

JO Available at the Joondalup Campus

ML Available at the Mount Lawley Campus

SW Available at ECU South West, Bunbury

* This unit has a prerequisite and is subject to ECU approval.

Additional units, as well as detailed information on unit content, credit points and learning outcomes are published online in the ECU Handbook: ecu.edu.au/handbook

How to apply: your study abroad journey

To be eligible for Study Abroad, you will need to meet English and Academic entry requirements.

English undergraduate and postgraduate entry

Academic IELTS overall minimum band score of 6.0, with no individual band less than 6.0. Visit the English Competency page for equivalent tests www.ecu.edu.au/future-students/course-entry/english-competency.

You may satisfy English if you have completed 0.375 equivalent full-time study load (EFTSL) of your university degree in English and are from Austria, Belgium, Canada, Denmark, Finland, France, Germany, Iceland, Netherlands, Norway, Sweden or Switzerland.

The Study Abroad program can also be packaged with English through one of our pathway providers. Visit www.ecu.edu.au/centres/international-office/our-services/agent-support/pathway-partners for more information.

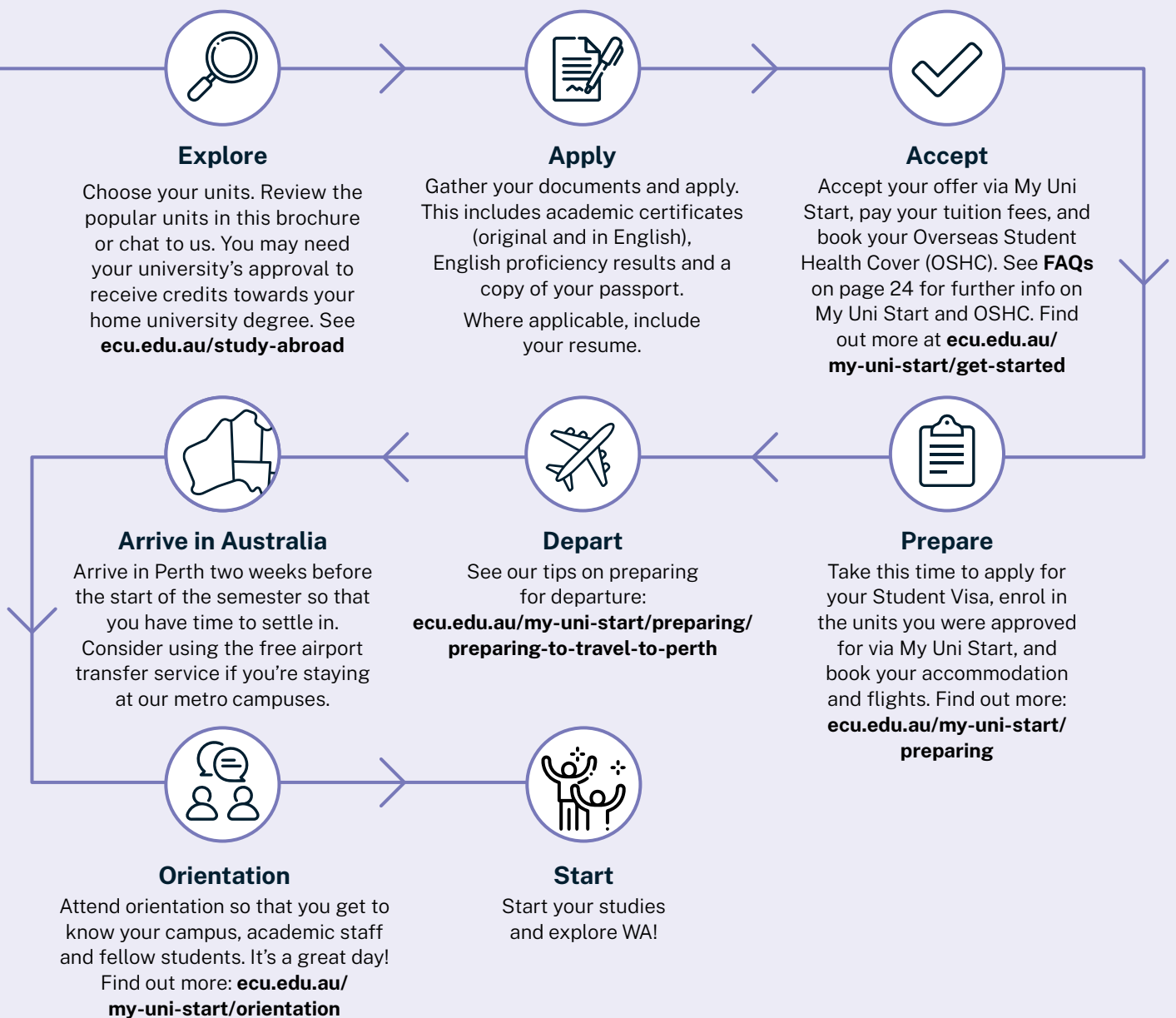
Academic undergraduate entry (band 3)

Admission may be satisfied through the completion of secondary schooling, an Australian Qualifications Framework (AQF) qualification or successful completion of 0.25 EFTSL of study at bachelor level or higher at an Australian higher education provider (or equivalent).

Academic postgraduate entry (band 6)

Admission may be satisfied through the completion of a bachelor (undergraduate) degree or higher.

Further information on academic admission can be found on the Course Entry page www.ecu.edu.au/future-students/course-entry.



Student accommodation

ECU offers international students a variety of accommodation options, including on-campus villages, off-campus private rental properties, and homestay with a Western Australian family.

On-Campus Student Village

ECU Villages offer easy, convenient and affordable accommodation across all three campuses. Get an all inclusive concierge experience with the following facilities and inclusions:

- Rent
- Furniture
- 24/7 Support
- Utilities (water, gas, electricity)
- High speed Wi-Fi (unlimited)
- Laundry accessible 24/7
- Outdoor BBQ area
- On-site parking available (additional cost)
- Sound space (Mount Lawley)
- TV Room with Foxtel and gaming consoles (Mount Lawley & Joondalup)
- Swimming Pool (Mount Lawley & Joondalup)
- Basketball court (Mount Lawley & Joondalup)
- Pool table, foosball and table tennis (Mount Lawley & Joondalup)
- Recreation and lounge area

Due to the high demand for on-campus accommodation, we recommend that you make your online application early.

→ For more information visit – campuslivingvillages.com/australia/perth/edith-cowan-university-village

Students staying at an ECU Village can also experience special events including:

- Movie nights
- Community Dinners
- Gaming nights
- Craft Workshops
- Karaoke nights (Mount Lawley & Joondalup)
- Sport Competitions



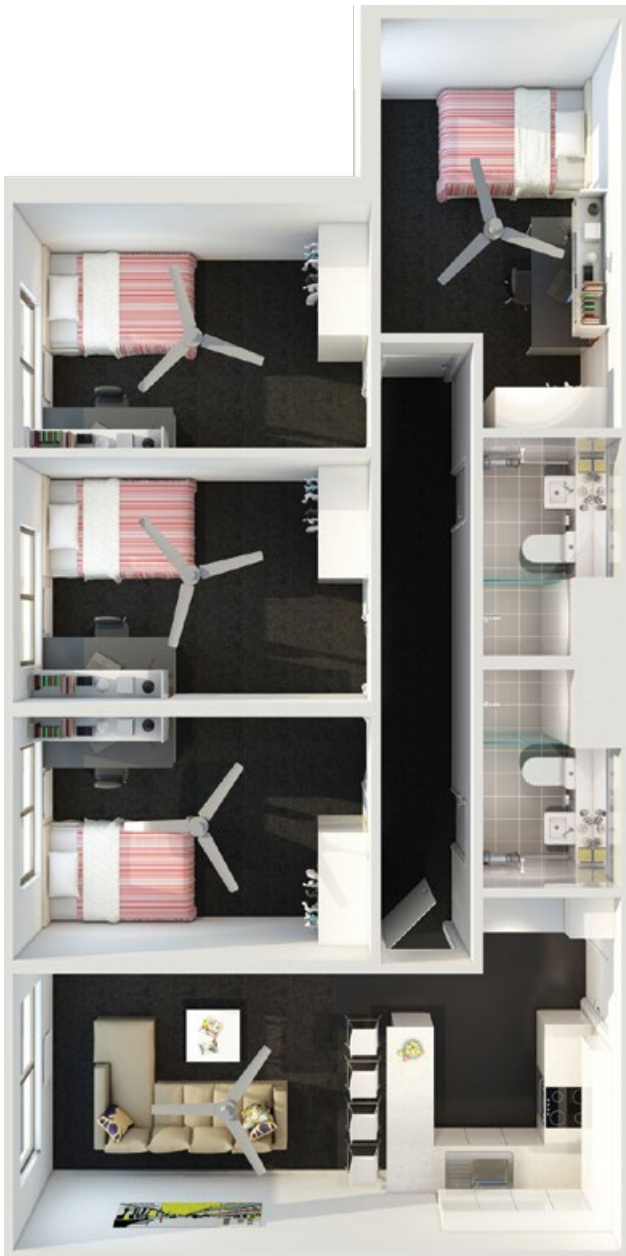
ECU Village – Joondalup Campus



ECU Village – Mount Lawley Campus



ECU Village – ECU South West Campus



Apartment view

Off-Campus Accommodation

Students may choose to rent an apartment, townhouse or house on their own or with fellow students. Private rental accommodation can be furnished or unfurnished.

For further information on off-campus options, please visit the **Accommodation Resources page** in the Student Support area.

→ Visit Accommodation Resources page — intranet.ecu.edu.au/student/support/accommodation-resources

Homestay

Students can also choose to live in a private home with an Australian family. The chance to be involved in daily life, the learning of our culture and customs, plus the added advantage of having the company of other people, are just some of the reasons Homestay is popular.

→ For more information — homestaynetwork.org/edith-cowan-university

Living Costs

Day-to-day living costs will vary, based on personal situations, interests and financial position. Students should plan a budget to suit their needs, but make sure it's flexible enough to allow for changes in circumstances.

For further information on the cost of living in Perth, including a cost of living calculator and resources on budget planning visit StudyPerth:

→ Visit StudyPerth — studyperth.com.au/live/perth-lifestyle/cost-of-living/

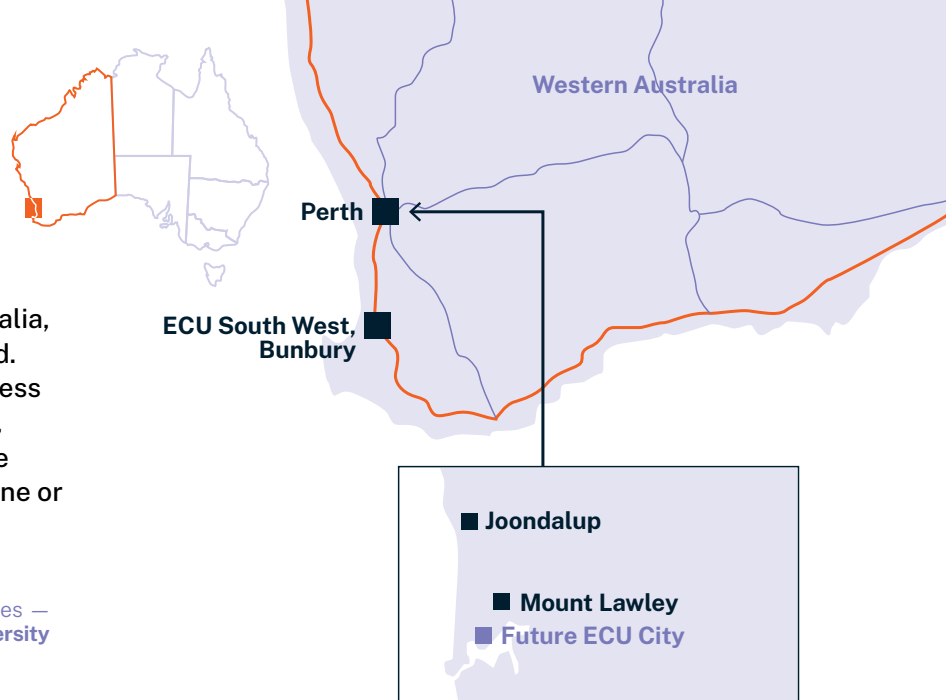
→ Limited number of accommodation bursaries are available. For more information — ecu.edu.au/scholarships/offers

Where will you study?

ECU has three campuses in Western Australia, located across Whadjuk and Wardandi land. Each has modern facilities, including wireless internet, 24-hour access to computer labs, libraries with open study spaces and a safe environment for you to study in – either alone or with other students.



→ Take a closer look at our campuses — [youtube.com/@edithcowanuniversity](https://www.youtube.com/@edithcowanuniversity)



25 mins

ECU Joondalup Campus from Perth city by train



15 mins

ECU Mount Lawley Campus from Perth city by bus



2 hours

ECU South West from Perth city by car

Joondalup Campus

The campus is only 25km north of Perth and a short walk or bus ride from the Joondalup Train Station and Lakeside Joondalup, one of the largest shopping centres in WA.

Joondalup Campus features award-winning architecture, cafés, a bar, an outdoor cinema, a lake and loads of trees and green spaces for study.

Here, you can study business, law, engineering, psychology, nursing, medical and health sciences, cybersecurity and other science-related courses and teacher education.

Mount Lawley Campus

Located in the thriving cultural hub of Mount Lawley and close to Perth's Central Business District (CBD), you can't help but be inspired by the artistic vibe at this campus.

Here, you'll find one of the world's leading performing arts academies, the Western Australian Academy of Performing Arts. Plus an array of arts and humanities courses.

The campus is also home to Kurongkurl Katitjin, ECU's Centre for Indigenous Australian Education and Research.

ECU South West

Located two hours' drive south of Perth, ECU South West in Bunbury is the largest university campus in regional Western Australia.

Here, you can expect small, personalised class sizes and courses in science, health sciences, nursing, social work and teacher education.

The campus features a café, mini-gym, crèche facilities, multi-purpose sports courts, and a library with 24-hour access to a computer lab.

Frequently asked questions

Why do I have to choose units before I apply?

We assess you for your units at the same time we assess you for your course entry. This saves you a lot of time, particularly when units have prerequisites.

Can I choose units from across different ECU Schools?

You can. Lots of our students are keen to get a taste of different ECU Schools. This could include three or four Schools if you like.

What do you mean by “unit”?

A unit refers to the different subject/courses/classes you enrol in. You would enrol in 3-4 units in one semester or 6-8 units in two semesters.

What is a unit prerequisite?

A prerequisite is an entry requirement. You may have met standard English and academic entry for the Study Abroad program, but you will also have to meet entry requirements for certain units.

Do I need to chat with my university back home about the units I choose?

Absolutely. They will be able to tell you if the ECU units you wish to study will count as credit towards your degree. Unfortunately, we cannot confirm this.

Is there an application deadline for Study Abroad?

Please keep an eye on the Important Dates page, which lists the recommended application dates www.ecu.edu.au/future-students/applying/important-dates

Could the units I study during Study Abroad count as credit towards an ECU degree?

It is possible. It will all come down to how well the units you have studied in Study Abroad align with your chosen ECU degree. Check out Credit and Recognition of Prior Learning (CRPL) www.ecu.edu.au/my-uni-start/get-started/applying-for-credit-and-recognition-of-prior-learning

Do I need health cover?

Yes, you need Overseas Student Health Cover (OSHC). It is compulsory if you plan to study on a Student Visa.

Medibank is ECU's preferred provider, but you can opt for any Government Registered Provider. Your offer letter will tell you more.

Is there anywhere I can find information on what certain ECU systems OR acronyms mean?

We know it can be difficult getting used to study at a new university, including the names of the different systems and the study language. Please take a moment to look at our Uni-speak Glossary www.ecu.edu.au/my-uni-start/glossary-uni-speak

What is My Uni Start?

My Uni Start is your one-stop place to accept your offer, activate your account, enrol in your units, book orientation and everything in between. Check out My Uni Start today www.ecu.edu.au/my-uni-start/overview

What kind of support is available once I become an ECU student?

The Student Hub is your place.

We have Hubs available on all three campuses, with each one dedicated to supporting our current students with matters relating to their studies.

Got another question?

If you have any further questions, jump online to chat with one of our students www.ecu.edu.au/degrees/international/ask-a-student




Unlock your superpower.

Creative thinkers
made here.







CRICOS Provider No. 00279B
RTO Code 4756
TEQSA ID PRV12160, Australian University
CS23015293 OCT23

Contact

 +61 8 6304 0000
(For calls outside Australia)

 ECU.EDU.AU

Find us at

 [ecujourney](#)
 [edithcowanuni](#)
 [edithcowanuniversity](#)
 [edithcowanuniversity](#)
 [edithcowanuni](#)
 [school/edith-cowan-university](#)