

2023 COURSE GUIDE

EDITH COWAN UNIVERSITY  
PERTH, WESTERN AUSTRALIA

A large, intricate circular graphic composed of multiple concentric layers. The innermost layer is a solid orange circle. Surrounding it are several layers of dotted orange lines. The next layer out is a complex, wavy orange line pattern. This is followed by a layer of small, repeating orange circular motifs. The outermost layer consists of several thick, solid orange concentric circles. The entire graphic is centered on a dark blue background.

**INTERNATIONAL  
FUTURE STUDENT  
GUIDE**

**W O R L D R E A D Y**

# THE WORLD IS WAITING.

## BECOME WORLD READY AT ECU.

### CONTENTS

Vice Chancellor's Message	3	Social Life at ECU	28
Who was Edith Cowan?	3	Our Study Areas	29
ECU at a Glance	4	Teaching and Learning Facilities	30
Why ECU is a Great Choice for International Students	6	Arts & Humanities	32
Student Ambassadors Speak Highly of Life at ECU	8	Business & Law	34
Why Study in Perth?	10	Engineering & Technology	36
10 Best Things To Do Around Perth	12	Medical & Health Sciences	38
ECU Campuses	14	Nursing & Midwifery	40
ECU City	15	Science	42
ECU Sri Lanka Campus	16	Teacher Education	44
Study Abroad at ECU	17	WAAPA	46
Student Accommodation	18	Research	48
Application Process	20	2023 World Ready Scholarships	50
Admission Requirements	22	Important Dates in 2023	50
Your Pathway to ECU	24	Facilities, Services and Support	51
Edith Cowan College	26		



#### SPANDA

The front cover features the 'Spanda' structure at Elizabeth Quay in Perth. Designed by internationally-renowned artist Christian de Vietri, Spanda is 29m tall and designed to represent ripples, linking the Swan River, land and sky. Add Elizabeth Quay to your 'must visit' list during your time at ECU!



ECU is committed to reconciliation and recognises and respects the significance of Aboriginal and Torres Strait Islander peoples' communities, cultures and histories. ECU acknowledges and respects the Noongar people as the traditional custodians of the land on which our campuses are located. [www.ecu.edu.au/about-ecu/indigenous-matters](http://www.ecu.edu.au/about-ecu/indigenous-matters)

# VICE CHANCELLOR'S MESSAGE

---

It's an exciting time to join Edith Cowan University (ECU) here in beautiful Western Australia.

Our University has an outstanding reputation for the quality of our teaching and the student experience. It's so good that we're frequently ranked as the top public university in Australia across a range of measures.



For example, in the 2022 *Good Universities Guide* we received a five-star rating for teaching quality. That's an amazing 15 years in a row we've received the top rating.

At ECU we're focussed on making sure our students succeed in their studies – as well as enjoying them.

In 2022, we received a prestigious Australian Award for University Teaching for our Inclusion in Action program which focusses on improving outcomes for students from diverse backgrounds, including international students.

Today we have more than 30,000 undergraduate and postgraduate students. We also have one of the most diverse student populations in Australia, with international students from more than 100 countries.

Our comprehensive range of degrees has been developed in consultation with industry groups and our teaching staff have extensive industry experience. So, you can expect industry-relevant teaching and research in a supportive study environment that is brimming with award-winning facilities.

For international students, we provide the opportunity to experience Australia's unique culture. Each of our three campuses – Joondalup and Mount Lawley in metropolitan Perth and the South West Campus in Bunbury – offer you the chance to study in a vibrant, modern environment that reflects the enviable quality of life we have in Western Australia.

So, what are you waiting for? I invite you to join us on this exciting journey and become World Ready.

A handwritten signature in black ink, appearing to read 'SJC', written over a white background.

**Professor Steve Chapman CBE**  
**Vice-Chancellor**

---

## WHO WAS EDITH COWAN?

**BORN IN 1861 IN GLENGARRY, A SHEEP STATION NEAR GERALDTON APPROXIMATELY 360KM NORTH-NORTHWEST OF PERTH, EDITH DIRKSEY COWAN BELIEVED EDUCATION WAS THE KEY TO GROWTH, CHANGE AND IMPROVEMENT.**

Edith Cowan OBE believed that education was fundamental to tackling the social issues of the day, and that it was the key to growth, change and improvement. Her tireless work influenced the course of education in Australia, paving the way for many people to access education they could only previously dream of.

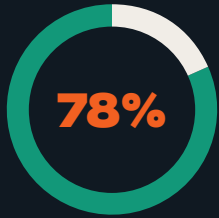
In 1921, Edith Cowan was the first woman elected to an Australian Parliament. She was also instrumental in Western Australian women obtaining voting rights and expanding access to education, and many professions, to females.

So it's fitting that when WA's oldest education institution became the state's newest public university, Edith Cowan University, it bore her name.

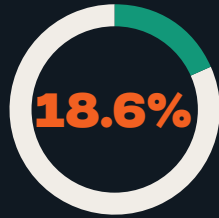


# ECU AT A GLANCE

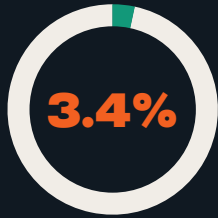
## 30,000+ STUDENTS



Domestic (local) students



International students



International study centre



## 8 TEACHING AND RESEARCH SCHOOLS



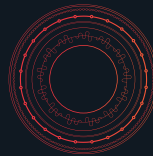
Arts & Humanities



Business & Law



Engineering & Technology



Medical & Health Sciences



Nursing & Midwifery



Science

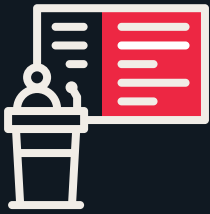


Teacher Education

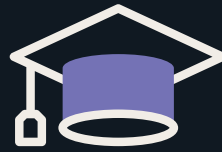


Western Australian Academy of Performing Arts





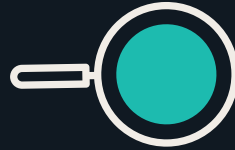
**1,954**  
Staff members



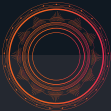
**140K+**  
ECU Alumni globally



**250+**  
Courses available

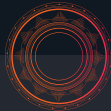


**8,000+**  
Postgraduate coursework  
and research students



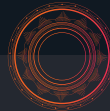
**\$AUD  
65,300**

median annual  
salary of ECU  
graduates, above  
national average  
(2020 QILT)



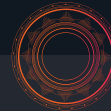
**\$853  
MILLION**

new ECU  
City Campus  
due for  
completion  
in 2025



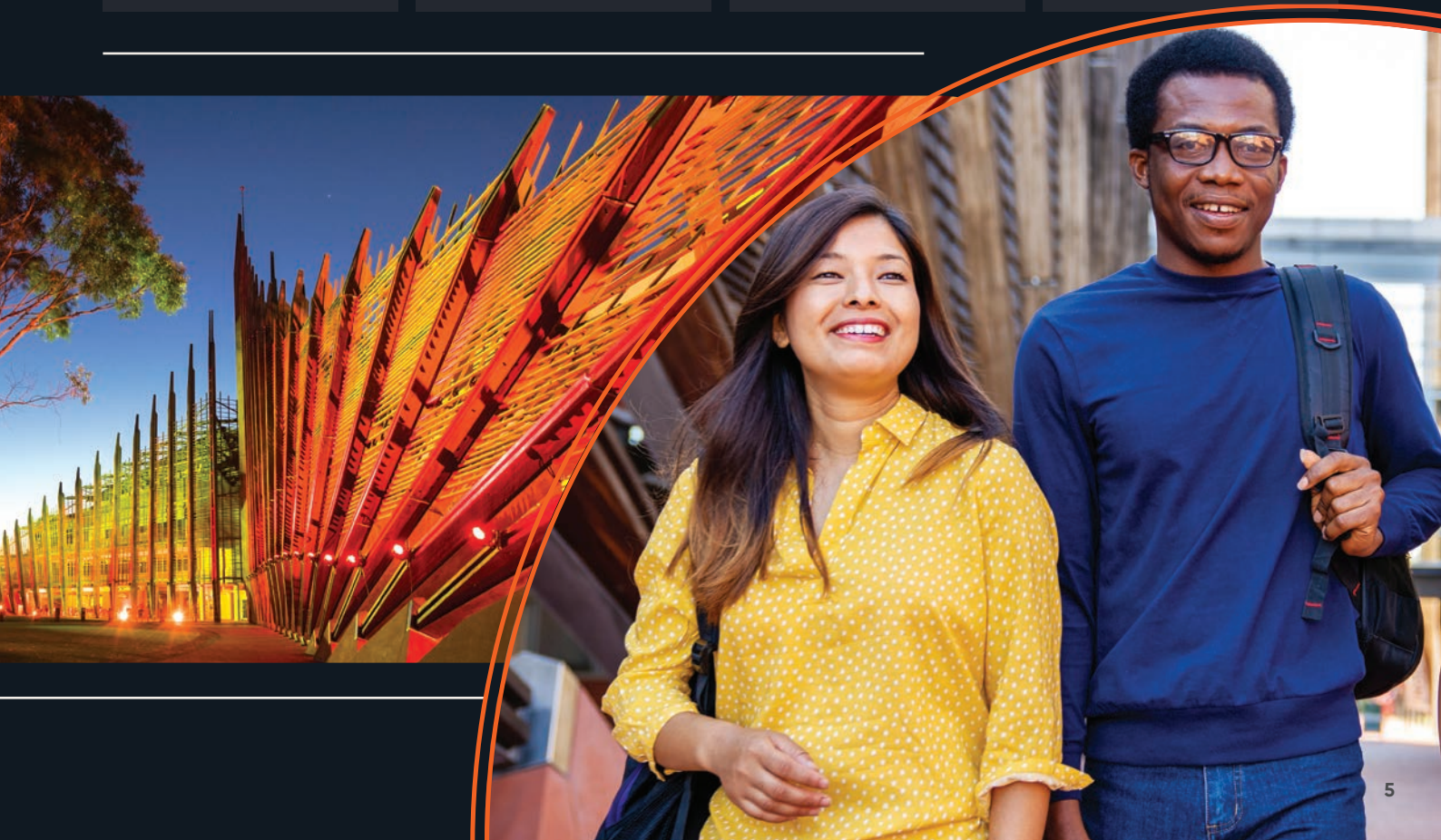
**\$20.1  
MILLION**

Research  
income  
in 2020



**\$10.6  
MILLION**

Block Grants  
for Research  
Support Programs  
and Research  
Training Programs



# WHY ECU IS A GREAT CHOICE FOR INTERNATIONAL STUDENTS

When you study at ECU, you'll get a 5 star education. That includes how you are taught, how you develop skills for the future and how you are supported throughout your course. You'll also leave ECU with memories of a great overall experience.

## HIGHEST QUALITY TEACHING

We're one of Australia's best universities for teaching. For an amazing 15 straight years, our graduates have rated the quality of our teaching 5 stars in the *Good Universities Guide*.

Only three other universities in the country can match this.



## BE A PART OF THE UNIVERSITY OF THE FUTURE

ECU is building a new campus in the centre of Perth that will transform our city and redefine the future of universities.

This stunning state-of-the-art campus, due for completion in late 2025 will be a place where technology, industry and creativity come together to deliver innovators, adaptive learners and tomorrow's global leaders. You could be one of them!



## LEGENDARY STUDENT SUPPORT

Studying in another country can be challenging for many people. But at ECU, we help you overcome any academic or personal challenges through our many support services.

We're one of the best universities in Australia for student support – we even have a Student Success team!



## MOVING UP IN THE WORLD RANKINGS



ECU has maintained its position in the top 500 in the Times Higher Education World University Rankings for 2022. This ranking places us in the top 2.5% of universities in the world.

We're also in the Times Higher Education world's top 100 young universities under 50 years old. This rates us highly on aspects like teaching, research, citations, international outlook and industry income.

Not only does ECU offer an unrivalled student experience, but it is also situated in beautiful, modern and vibrant Perth, offering an outstanding lifestyle to complement your studies. Discover what Perth has to offer on pages 10-13.



### **DEGREES THAT TAKE YOU PLACES**

ECU degrees are internationally-recognised and many of our courses are professionally-accredited by national and international professional bodies and organisations.

What that means is your ECU qualification will help you find work around the world, including in your home country.

### **GREAT INDUSTRY CONNECTIONS**

ECU has many partnerships and links with industry groups and organisations across Western Australia, Australia and around the globe.

These connections help us provide you with opportunities to gain hands-on experience, internships or practicums while you're studying. It can also help you find employment after you graduate!



**QILT**

Quality Indicators for Learning and Teaching

### **THE BEST OVERALL EXPERIENCE**

At ECU we know that university life is more than studying and attending lectures. Here we encourage you to enrich your life with student clubs, sports teams, volunteering opportunities and more.

In fact, we were ranked best of all Australian universities for the overall experience of undergraduate international students in the 2020 QILT survey.



**REASONS TO CHOOSE ECU**

## **THINK YOU KNOW EVERYTHING ABOUT ECU?**

Here are 101 things you might not know.

**SHOW ME**

**OR GO TO:**  
[101reasons.ecu.edu.au](http://101reasons.ecu.edu.au)

# STUDENT AMBASSADORS SPEAK HIGHLY OF LIFE AT ECU

Our International Student Ambassadors play an important role in helping new students adapt to life in Western Australia and at ECU, providing connection to other students, social activities and support services.



## MANDIP DAHAL

Bachelor of Science (Cyber Security)

### Nepal

"My ECU experience has been great so far. I have been enjoying my time here in Perth, which is also one of the world's top cities for liveability. I have also been lucky to have made friends from all over the globe. The wide range of support services has also been a great resource for me during my time here at ECU."



## HASIT GADANI

Master of Project Management

### India

"Choosing ECU is one of the best decisions I have ever made. The university has exceeded my expectations and every passing day I feel grateful to be a part of such an amazing community. The commitment of the staff has been impeccable. I know it could get difficult leaving family and friends, but ECU is one big family where you will never be alone."



## DEEANDRA JOUBERT

Bachelor of Education  
(Secondary)

### South Africa

"I have made unbreakable bonds with some of my classmates and genuine connections with lecturers and mentors with whom I share similar values."



## CAMILLE JEAN-MARIE

Bachelor of Psychology  
and Counselling

### Mauritius

"At ECU, they celebrate everything and everyone. Everyone has their place in this university."





● **ANDRA CIMPEAN**

Master of Cyber Security

**Romania**

"I live in the ECU village on campus and it's amazing. Being surrounded by students from all over the world and being part of such a diverse community makes it magical."



● **GRACE YIN**

Master of Engineering (Chemical)

**China**

"I have learnt a lot at ECU. From the cooperation with classmates, the communication with all the lecturers, the connection with the people I've met on campus, they help me to find another way to work, to live."

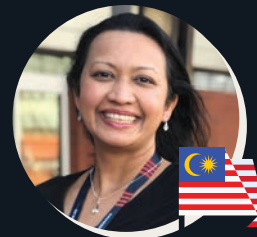


● **DELARN DE SILVA**

Master of Cyber Security

**Sri Lanka**

"As a mature student, coming from my home country leaving my family behind, and getting back to university studies would have become much harder if not for the support I had from ECU."



**NIRMALA ARUNSELAM** ●

Master of Professional Communication

**Malaysia**

"It has been a fulfilling journey, especially when I started joining the activities and clubs offered at ECU, enabling me to meet people from all over the world."

# WHY STUDY IN PERTH?

With a high standard of living, Perth is a vibrant, sophisticated and safe city that is regularly rated among the top cities in the world for liveability<sup>1</sup>. The mild Mediterranean climate, endless blue skies, fresh air and brilliant white beaches are hard to beat!



## STUDENT EMPLOYMENT

Students typically work in administrative, hospitality and retail roles, and student visa holders can work part-time up to 40 hours per fortnight, and full-time during semester breaks.



## TUITION FEE WAIVER FOR DEPENDANTS

Dependants of Masters or Doctoral degree students can attend the West Australian public school system without paying the mainstream tuition fee that usually applies to overseas students.

Visit [www.ecu.edu.au/my-uni-start/preparing/living-and-studying-in-perth](http://www.ecu.edu.au/my-uni-start/preparing/living-and-studying-in-perth) for more information.



## SKILLED MIGRATION PATHWAY

The WA State Government has expanded the **Graduate Occupation List** to include over 300 occupations, providing a skilled migration pathway for graduating WA international students with an option to apply for permanent residence.

To find out more visit [www.mediastatements.wa.gov.au/Pages/McGowan/2022/05/Welcoming-skilled-migrants-and-international-students-to-study-live-and-work-in-WA.aspx](http://www.mediastatements.wa.gov.au/Pages/McGowan/2022/05/Welcoming-skilled-migrants-and-international-students-to-study-live-and-work-in-WA.aspx).

## PERTH'S REGIONAL STATUS – EARN AN EXTRA YEAR ON POST-STUDY WORK VISA

The Australian Federal Government awarded 'regional city status' to Perth in Western Australia.

As an international student, that means you may be eligible to stay in Western Australia for four to six years after completing your degree.

A post-study work visa may give you the opportunity to gain more work experience and you could be eligible for skills assessments required for a skilled visa application.

Perth's regional city status will offer these opportunities to international students:

- Access to additional regional migration points
- Family Sponsorship
- Additional year of post study work rights.

Please note: there could be changes as this initiative is formally implemented by Western Australian and Federal government departments.

To find out more about living and studying as an international student in Australia, please visit the Department of Home Affairs [immi.homeaffairs.gov.au/visas/getting-a-visa/visa-listing/temporary-graduate-485](http://immi.homeaffairs.gov.au/visas/getting-a-visa/visa-listing/temporary-graduate-485)

## WE'RE CLOSER THAN YOU THINK!

Perth also benefits from sharing the same time zone as 60 per cent of the world's population. And it's the closest Australian capital to cities in Asia, Africa, and Europe. No less than 22 airlines fly between Perth and international cities.

Perth  
- 3 hours



Azerbaijan  
Pakistan  
Tajikistan  
Turkmenistan

Perth  
- 2.5 hours



India  
Sri Lanka

Perth  
- 2 hours



Bangladesh  
Bhutan  
Nepal

Perth  
- 1 hour



Indonesia  
Laos  
Mongolia  
Vietnam

Perth Time  
(AWST)



Brunei  
China  
Hong Kong  
Malaysia  
Philippines  
Singapore

Perth  
+ 1 hour



Japan  
South Korea



**POPULATION:**

**PERTH – 2.7 MILLION<sup>1</sup>**

**AUSTRALIA – 26 MILLION<sup>1</sup>**

**PERTH IS RANKED ONE OF THE “WORLD’S MOST LIVEABLE CITIES”.<sup>2</sup>**



**PERTH IS RANKED #21 OF 231 WORLD CITIES FOR QUALITY OF LIFE.**

Measured by stability, healthcare, culture and environment, education and infrastructure.<sup>3</sup>



## The New York Times

The **New York Times** puts Perth on its 2019 list of **52 Places to Go** – Perth is 43rd on the list, with the NYT recognising a decade-long development boom having reinvigorated the city.<sup>4</sup>



**PERTH IS IN THE TOP 50 BEST STUDENT CITIES IN THE WORLD FOR THE PAST EIGHT YEARS.<sup>5</sup>**

Perth is ranked in the top 50 in the world for most desirable student city.<sup>6</sup>

**WA’S ECONOMY IS ONE OF THE BEST IN THE WORLD.<sup>7</sup>**



Perth has over

**80KM OF COASTLINE**

You’re never going to be stepping on anyone’s towel at the beach!

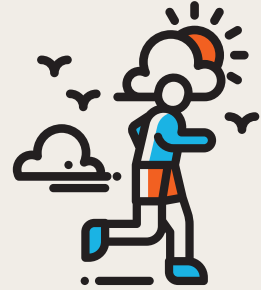
**GET ON YOUR BIKE!**

Perth is a perfect cycling city with more than **57,000kms** mapped over **255 cycle routes**.

**IT’S A GREAT WAY TO EXPLORE THE NATURAL WONDERS OF THE CITY.**



**PERTH IS ONE OF THE WORLD’S HEALTHIEST AND SUNNIEST CITIES!<sup>8</sup>**



Perth enjoys the most days of sunshine of all of Australia’s major cities!

**AVERAGE TEMPERATURE IN SUMMER IS 17°C - 29°C AND 10°C - 18°C IN WINTER.**

Even in winter, Perth enjoys plenty of warm sunshine.



**FANTASTIC VALUE ON PUBLIC TRANSPORT**

International students receive a **40% discount** on all public transport throughout Western Australia.



Our Joondalup Campus is also serviced by the **FREE** Central Area (CAT) bus network!

**Sources:**

- 1 ABS abs.gov.au to 31/12/21
- 2 The Economist Intelligence Unit’s Global Liveability Report, 2022
- 3 Mercer Quality of Life Survey, 2019
- 4 www.nytimes.com/interactive/2019/travel/places-to-visit.html
- 5 QS (London), Best Student Cities 2019
- 6 QS (London), Best Student Cities 2019
- 7 www.mediastatements.wa.gov.au/Pages/McGowan/2022/05/WAs-domestic-economy-powers-to-strongest-growth-in-a-decade.aspx
- 8 Spotahome, Healthiest Cities Index (Accessed 1 May 2020)

# 10 BEST THINGS TO DO AROUND PERTH



Image courtesy of Tourism Western Australia



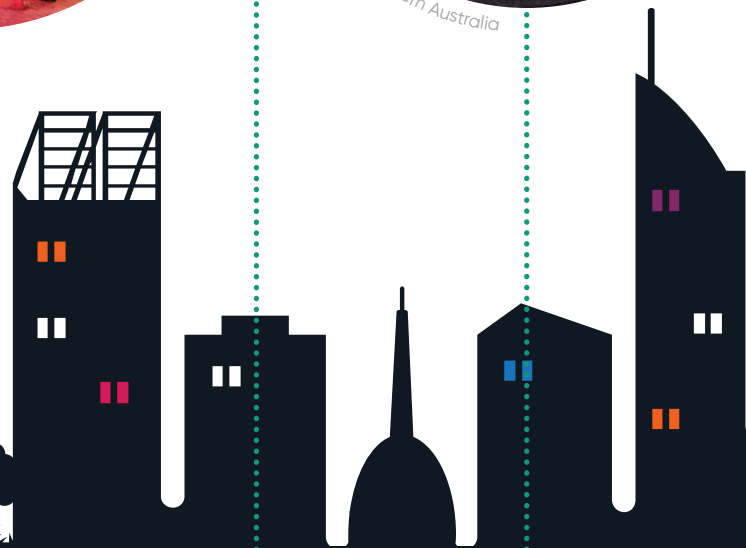
Image courtesy of Tourism Western Australia



Image courtesy of Tourism Western Australia



Image courtesy of Tourism Western Australia



1

Go see a film at one of several open air cinemas, including one on ECU's Joondalup Campus!

2

Attend a major sporting event or concert at Optus Stadium, voted 'Venue of the Year 2022' at the (global) Stadium Business Awards.<sup>1</sup>

3

Get along to one of Perth's annual international arts festivals – Fringe World Festival and Perth Festival.

4

Visit stunning Elizabeth Quay. Climb Perth Bell Tower, take a gondola ride on the Swan River or explore the sights on a Segway.

5

Catch the best sunsets in Australia.

Sources:

1. [optusstadium.com.au/news/2022/venue-of-the-year](https://optusstadium.com.au/news/2022/venue-of-the-year)
2. Austradium Awards 2018



Image courtesy of Tourism Western Australia



Image courtesy of Michael Haluwana from Aeroture



Image courtesy of Tourism Western Australia

6

Attend an event at RAC Arena, voted Australia's Best Indoor Stadium 2018.<sup>2</sup>

7

Enjoy a free guided walk in Kings Park, one of the world's largest inner city parks, with spectacular city and river views.

8

Take a ferry across to Rottnest Island and take a quokka selfie.

9

Explore the extensive cycle tracks around Perth, including a delightful loop around the Swan River to South Perth Foreshore.

10

Visit Boola Bardip (WA Museum) and immerse yourself in Western Australia's many stories of our people, our places and our culture.



# ECU CAMPUSES

**WE ARE LOCATED OVER THREE  
CAMPUSES IN BEAUTIFUL  
WESTERN AUSTRALIA.  
ALL OF OUR CAMPUSES CAN  
BE ACCESSED CONVENIENTLY VIA  
PUBLIC TRANSPORT.**

## JOONDALUP CAMPUS

ECU's spacious and modern main campus is in Joondalup, 25km north of Perth. Joondalup is a busy neighbourhood and home to Lakeside Joondalup Shopping Centre. The Joondalup Campus is connected to the train station and other key places by the free Central Area Transit (CAT) bus network.

25  
mins



ECU Joondalup Campus  
from Perth city by train

## MOUNT LAWLEY CAMPUS

ECU's boutique campus is located in the thriving cultural hub of Mount Lawley, 4.5km from the centre of Perth. The Mount Lawley Campus offers courses in creative arts, media, communications, design and performing arts, and offers an inspiring and buzzing artistic vibe.

15  
mins



ECU Mount Lawley Campus  
from Perth city by bus

## ECU SOUTH WEST CAMPUS

Located two hours' drive south of Perth, ECU South West in Bunbury is the largest university campus in regional Western Australia. The South West Campus offers courses in arts, commerce, science, health sciences, nursing and midwifery, social work and teacher education.

2  
hours



ECU South West Campus  
from Perth city by car



# ECU CITY

**OUR FUTURE CAMPUS IN THE HEART OF THE PERTH CBD WILL REPRESENT THE FUTURE OF UNIVERSITY EDUCATION – URBAN, CONNECTED, INTEGRATED WITH BUSINESS AND COMMUNITY – AND PART OF THE LIFEBLOOD OF A THRIVING CITY.**

**ECU CITY WILL SEAMLESSLY BRING TOGETHER CREATIVE INDUSTRIES, BUSINESS AND TECHNOLOGY TO DELIVER A WORLD-CLASS UNIVERSITY CAMPUS THAT TRANSFORMS THE CITY OF PERTH AND THE UNIVERSITY.**

Once complete in late 2025, ECU City will be home to:

- Business and Law
- Technology
- Arts, Design and Communications
- Broadcasting
- WA Screen Academy
- Western Australian Academy of Performing Arts (WAAPA)
- Kurongkurl Katitjin, ECU's Centre for Indigenous Australian Education and Research
- Founding Pianos

ECU City is unique among Australian university campuses in its integration into the urban fabric.

Located at the heart of Perth's commercial, cultural and entertainment districts, ECU City will put students at the doorstep of industry and business.

The campus will feature state-of-the-art digital smart labs, design studios and galleries, film production and broadcast studios, an industry innovation and engagement hub, and five world-class performance venues.

To follow the journey and discover more, visit [www.citycampus.ecu.edu.au](http://www.citycampus.ecu.edu.au)

ECU City will be located in the heart of the Perth CBD.



# ECU SRI LANKA CAMPUS

**Getting an ECU degree is more accessible and affordable than ever! Sri Lankan and international students can now study for a degree from ECU in Sri Lanka.**

Whether you choose to complete your study in Sri Lanka or transition from first-year studies to your second year at ECU in Australia, our Sri Lanka Campus in Colombo offers a seamless pathway to completing your degree and enjoying a truly global experience.

Courses offered at our Sri Lanka Campus include:

- Bachelor of Commerce (International Business)
- Bachelor of Commerce (Management)
- Bachelor of Computer Science
- Bachelor of Design (Games and Interactive Design)
- Bachelor of Science (Biomedical Science)
- Bachelor of Science (Cyber Security)
- Bachelor of Science (Nursing Studies) (3rd year only)

Visit [ecu.edu.lk](http://ecu.edu.lk) for more details and course availability.

## OFFSHORE LOCATIONS

We also offer some of our courses at the following offshore partner locations:

Country		Courses Offered
China	Zhejiang Normal University	Master of Education (Education Leadership)
Singapore	PSB Academy	Bachelor of Science (Cyber Security) Bachelor of Science (Exercise and Sports Science)
United Arab Emirates	Centre of Aviation and Security Studies (CASS)	Diploma in Ground Handling Diploma in Aviation Security Management
Vietnam	Ho Chi Minh City Open University	Master of Education (TESOL)



# STUDY ABROAD

Our Study Abroad program is the perfect way to experience Australia. Study with ECU for up to a year, and explore a unique part of the country. Better still, our Study Abroad tuition fees are great value!

## SELECT YOUR COURSE

The course code you select for Study Abroad is based on your study level and duration:

- Study Abroad Program (Undergraduate) 1 Semester
- Study Abroad Program (Undergraduate) 2 Semesters
- Study Abroad Program (Postgraduate) 1 Semester
- Study Abroad Program (Postgraduate) 2 Semesters

## TUITION FEES

The cost of Study Abroad depends on the number of credit points you will study and the units you select. We have created two special fee groups for 2023.

Fee Group A includes hundreds of units from disciplines in Arts, Business, Computing, Design, Economics, Education, Humanities, Law, Mathematics, Science (non-lab based) and Social Science:

- 45 credit points (3 units): \$5,220 AUD fees approx May
- 60 credit points (4 units): \$6,960 AUD fees approx May

Fee Group B includes a special selection of units in the disciplines of Engineering, Nursing, Paramedicine and Science (lab-based):

- 45 credit points (3 units): \$7,800 AUD fees approx May
- 60 credit points (4 units): \$10,400 AUD fees approx May

Use the Fee Calculator to check the cost of your chosen units [apps.ecu.edu.au/fees-calculator](https://apps.ecu.edu.au/fees-calculator)

## SELECT YOUR UNITS

ECU has a fantastic range of units to choose from, across all eight schools.

If you need help selecting units, you can:

- Search the ECU Handbook: [ecu.edu.au/handbook](https://ecu.edu.au/handbook)
- Visit our website: [www.ecu.edu.au/degrees/study-abroad](https://www.ecu.edu.au/degrees/study-abroad)
- Chat with your Authorised Agents: [ecu.edu.au/future-students/applying/find-an-authorised-agent](https://ecu.edu.au/future-students/applying/find-an-authorised-agent)
- Contact ECU: [international.partnerships@ecu.edu.au](mailto:international.partnerships@ecu.edu.au)
- Use our chat box: [askus2.ecu.edu.au](https://askus2.ecu.edu.au)

Undergraduate and Postgraduate Study Abroad applicants require an Academic IELTS overall minimum band score of 6.0, with no individual band less than 6.0.

Information on Academic requirements can be found on the Course Entry page [ecu.edu.au/future-students/course-entry](https://ecu.edu.au/future-students/course-entry)



# STUDENT ACCOMMODATION

ECU offers international students a variety of accommodation options, including on-campus villages, off-campus private rental properties, and home-stay with a Western Australian family.

## ON-CAMPUS STUDENT VILLAGE

ECU Villages offer easy, convenient and affordable accommodation across all three campuses. Get an all inclusive concierge experience with the following facilities and inclusions:

- Rent
- Furniture
- 24/7 Support
- Utilities (water, gas, electricity)
- High speed Wi-Fi (unlimited)
- Laundry accessible 24/7
- Outdoor BBQ area
- On-site parking available (additional cost)
- Sound space (Mount Lawley)
- TV Room with Foxtel and gaming consoles (Mount Lawley & Joondalup)
- Swimming Pool (Mount Lawley & Joondalup)
- Basketball court (Mount Lawley & Joondalup)
- Pool table, foosball and table tennis (Mount Lawley & Joondalup)
- Recreation and lounge area

Due to the high demand for on-campus accommodation, we recommend that you visit [campuslivingvillages.com/australia/perth/edith-cowan-university-village](http://campuslivingvillages.com/australia/perth/edith-cowan-university-village) and make your online application early.

Students staying at an ECU Village can also experience special events including:

- Movie nights
- Community Dinners
- Gaming Nights
- Craft Workshops
- Karaoke Nights (Mount Lawley & Joondalup)
- Sport Competitions



Apartment view



ECU Village – Mount Lawley Campus



ECU Village – Joondalup Campus



### OFF-CAMPUS ACCOMMODATION

Students may choose to rent an apartment, townhouse or house on their own or with fellow students. Private rental accommodation can be furnished or unfurnished.

Get in touch with **ECU Village** for information on off-campus accommodation.

### HOMESTAY

Students can also choose to live in a private home with an Australian family. The chance to be involved in daily life, the learning of our culture and customs, plus the added advantage of having the company of other people, are just some of the reasons Homestay is popular.

Visit [homestaynetwork.org/edith-cowan-university](http://homestaynetwork.org/edith-cowan-university) for more information.

## LIVING COSTS

Day-to-day living costs will vary, based on personal situations, interests and financial position. Students should plan a budget to suit their needs, but make sure it's flexible enough to allow for changes in circumstances. Here is a guide to some key weekly expenses:

	Accommodation on-campus*	Share house off-campus	Homestay off-campus
Rent	From \$120	\$165-\$300	\$235-\$325
Food	\$80-\$150	\$80-\$150	Included
Transport to University	Walking distance	\$20-\$45	\$20-\$45
Electricity & gas	Included	\$35	Included
Internet	Included	\$10-\$20	\$10-\$20
Mobile phones	\$15	\$15	\$15

Estimated costs at time of print

\*Limited number of accommodation bursaries are available, visit [ecu.edu.au/scholarships/offers](http://ecu.edu.au/scholarships/offers) for more information.

# APPLICATION PROCESS

Here's how students can submit an application to ECU for undergraduate or postgraduate coursework courses. Our Education Agents can help with finding the right course, gathering documents and/or applying to ECU:



## EXPLORE

Choose your course and check your eligibility

Visit [ecuworlready.com.au/international](https://ecuworlready.com.au/international) for more details.



## APPLY

Gather your documents

- Academic Certificates and transcripts (both in original and English language)
- English Proficiency results
- Copy of passport (Photo page)
- Resumé (if applicable)
- Work Reference (if applicable)
- Marriage or name change certificate (if applicable)
- Copy of current Australia visa, evidence of visa compliance, any current CoEs and academic results (if applicable)

Submit your application through Authorised Agents ([ecu.edu.au/future-students/applying/find-an-authorised-agent](https://ecu.edu.au/future-students/applying/find-an-authorised-agent)) or apply direct online

Admissions will assess your scholarship eligibility at time of application



## ACCEPT

Receive your offer – may take up to ten business days after application

Accept your offer via **My Uni Start**

Make payment

[intranet.ecu.edu.au/student/money-matters/how-to-pay](https://intranet.ecu.edu.au/student/money-matters/how-to-pay)

Book your Overseas Student Health Cover (OSHC)



## ENROL

Visit **My Uni Start** to get information on your course planner to enrol into units. We recommend this is done as soon as possible to get the best time and day that suits your needs.





### PREPARE

Apply for your visa  
Decide on your accommodation type

- Check out our accommodation scholarship
- Book your accommodation



### BEFORE LEAVING HOME

- Book your flight and plan to arrive at least two weeks before semester start
- Complete your registration on **My Uni Start**
- Book your transfer from the airport to your accommodation



### ATTEND ORIENTATION

Orientation provides you with essential information for your success.

There is a variety of activities to assist you with your studies, meeting new people and settling into life in Australia.

You can book events online.



### ARRIVE IN AUSTRALIA

- Collect your free welcome pack at the StudyPerth International Desk at the airport
- Contact home – let your friends and family know your safe
- Activate your Medibank OSHC
- Explore ECU and the area where you are living



## GETTING PERSONAL SUPPORT TO SUCCEED

Not every student journey is simple or stress free.

**Student Success** are able to support you to negotiate uni life, life in Australia and your study requirements as a visa holder.

**Learning advisors** assist with developing your study skills, providing workshops on academic and English Language skills as well as drop-in sessions. They conduct workshops, prepare academic skill resources, and provide one-on-one and group consultations.

**Peer mentors** help new students build social and academic networks so you settle more quickly.

**Equity, Diversity & Disability** is a free, confidential service for students with a disability and/or medical condition, either permanent or temporary, and can help make uni life a better experience.

**Careers and Employability Services** offer free career counselling and job search support to all students including:

- Job application skills, including resumé and cover letter writing, selection criteria and interviews
- Advice on how to find work and access to CareerHub jobs portal for part-time, casual, full time and graduate employment opportunities
- On-campus employer presentations, career fairs and workshops
- Volunteering opportunities to improve your leadership, communication and employability skills
- Tools to plan and manage your career pathway

[www.ecu.edu.au/future-students/ecu-experience](http://www.ecu.edu.au/future-students/ecu-experience)

# ADMISSION REQUIREMENTS

There are minimum admission requirements to enter ECU undergraduate and postgraduate courses. Students must meet these, in addition to meeting any prerequisites and/or special admission requirements for the course for which they intend to apply.

## AWARD SPECIFIC REQUIREMENTS

Specific Awards	Academic Entry Requirements	Standard Entry	Higher Entry	English Entry Requirements
<b>GCE A Levels</b>	The provision of your official A Level results with a minimum aggregate score of 5 from a minimum of 2 and a maximum of 3 A Level subjects (where A = 5, B = 4 C = 3, D = 2, E = 1)	5	8	GCE A Level English Language – Grade E or above GCE O Level or GCSE English Language – Grade C or above
<b>International Baccalaureate Diploma</b>	Minimum of 24 points consisting of aggregate from 3 higher level and 3 subsidiary level	24	28	Higher Level English – Grade 3 (2011) – Grade 4 (2012 onwards)
<b>Western Australian Certificate of Education (WACE)</b>	Australian Tertiary Admission Rank (ATAR) Subject to annual change	70	71-90 <sup>#</sup>	Scaled score of 50 in English, Literature or ATAR English as an Additional Language/Dialect
<b>Western Australia Universities Foundation Program (WAUFP)</b>	Subject to annual change	53.5	59	ELACS 50
<b>Edith Cowan College Foundation Program</b>	Completion of Edith Cowan College Foundation Program	60	80-85 <sup>#</sup>	Completion of Edith Cowan College Foundation Program



Visit [international.ecu.edu.au/secondary-school-results](https://international.ecu.edu.au/secondary-school-results) for a complete list of country-specific undergraduate admission requirements.

<sup>#</sup> ATAR higher entry score requirements may vary depending on the course.



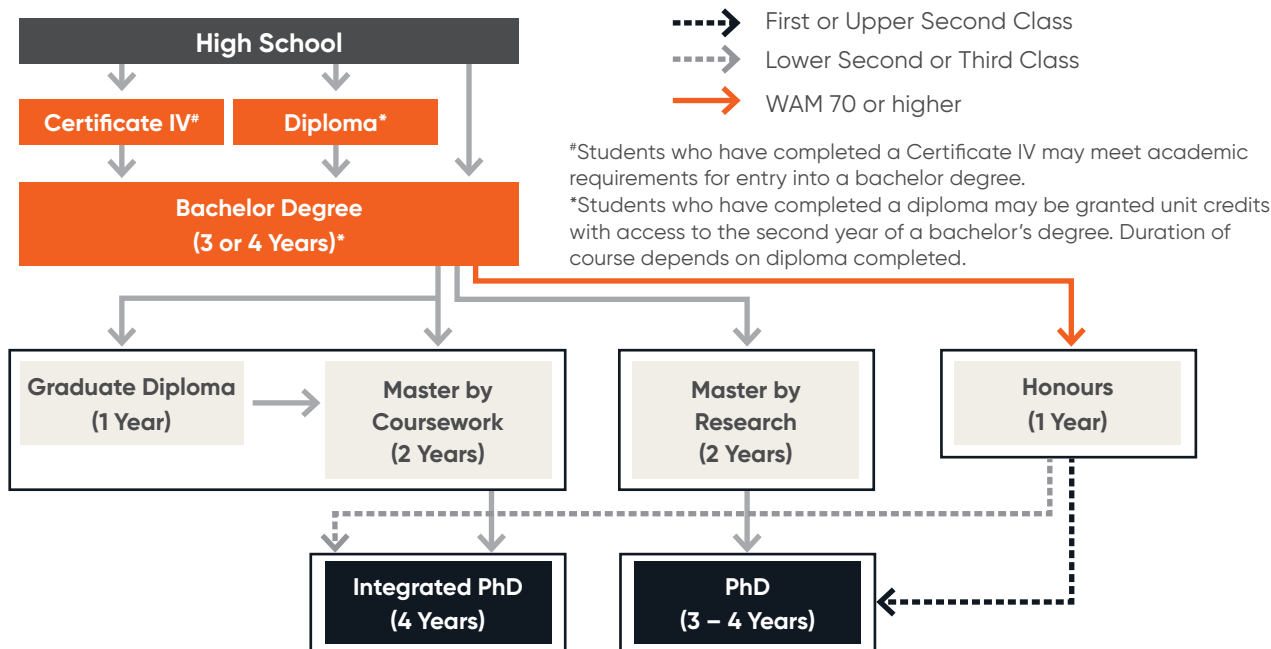
For a full list of accepted English results, including Cambridge, please refer to: [ecu.edu.au/future-students/course-entry/english-proficiency-bands](http://ecu.edu.au/future-students/course-entry/english-proficiency-bands)

## MINIMUM ENGLISH REQUIREMENTS

Academic/English	Requirements	Course Exceptions
<b>Undergraduate</b>		
<b>Academic</b>	<p>There are various ways to meet our admission requirements, such as:</p> <ul style="list-style-type: none"> <li>• Secondary school results</li> <li>• Successful completion of one year of tertiary study from a recognised institution</li> <li>• Completed Diploma program from a recognised institution</li> </ul>	<p><b>Higher Entry:</b> Includes, but not limited to, Bachelor of Science (Exercise Science and Rehabilitation), Bachelor of Science (Occupational Therapy) and Bachelor of Speech Pathology.</p> <p><b>Assessed on case-by-case basis:</b> Includes, but not limited to, Bachelor of Engineering Science, Bachelor of Law and associated double degrees.</p>
<b>English</b>	<p><b>Academic IELTS:</b> 6.0 (no individual band less than 6.0)</p> <p><b>TOEFL iBT:</b> 70 (no individual score less than 17)</p> <p><b>Pearson Test of English (PTE) Academic:</b> 52 with no score less than 50</p> <p>English language results are typically valid for two years. Please check validity prior to application.</p>	<ul style="list-style-type: none"> <li>• Bachelor of Education (Early Childhood Studies)</li> <li>• Bachelor of Education (Primary)</li> <li>• Bachelor of Education (Secondary)</li> <li>• Bachelor of Science (Nursing)</li> <li>• Bachelor of Science (Nursing) / Bachelor of Science (Midwifery)</li> <li>• Bachelor of Science (Occupational Therapy)</li> <li>• Bachelor of Science (Paramedical Science)</li> <li>• Bachelor of Social Work</li> <li>• Bachelor of Speech Pathology</li> </ul>
<b>Postgraduate</b>		
<b>Academic</b>	<ul style="list-style-type: none"> <li>• Previous university studies</li> <li>• Professional experience</li> </ul>	
<b>English</b>	<p><b>Academic IELTS:</b> 6.5 (no individual band less than 6.0)</p> <p><b>TOEFL iBT:</b> 84 (with no score below 17)</p> <p><b>Pearson Test of English (PTE):</b> 58 with no score less than 50</p> <p>English language results are typically valid for two years. Please check validity prior to application.</p>	<ul style="list-style-type: none"> <li>• Master of Midwifery Practice</li> <li>• Master of Nursing</li> <li>• Master of Nursing (Graduate Entry)</li> <li>• Master of Nursing (Nurse Practitioner)</li> <li>• Master of Nutrition and Dietetics</li> <li>• Master of Professional Psychology</li> <li>• Master of Clinical Psychology</li> <li>• Master of Teaching (Early Childhood)</li> <li>• Master of Teaching (Primary)</li> <li>• Master of Teaching (Secondary)</li> </ul>

# YOUR PATHWAY TO ECU

There are several pathways to study at ECU and you don't necessarily need a degree to qualify. And for postgraduate studies, relevant work experience may also help you with admission to some of our courses. See below for the most common undergraduate and postgraduate pathways.



## ACADEMIC PATHWAYS

If you don't meet ECU's academic competency requirements, we encourage you to consider studying at one of our pathway providers, where you will be able to receive a packaged offer, making it easier for you to obtain your student visa. You may also be granted up to 120 credit points and fast tracked into the second year of a bachelor's degree.

Visit [international.ecu.edu.au/entry](http://international.ecu.edu.au/entry) for more details.

## Pathway Providers

 <p><b>Australian Institute of Workplace Training (AIWT)</b> www.aiwt.edu.au Pathway into commerce and social science.</p>	 <p><b>Australian Professional Skills Institute (APSI)</b> apsi.edu.au Pathway into commerce, hospitality, tourism and social science.</p>	 <p><b>Edith Cowan College (ECC)</b> edithcowancollege.edu.au Pathway into 30+ ECU courses.</p>	 <p><b>International Institute of Business and Technology (IIBT)</b> iibt.edu.au Pathway into commerce, computer sciences, cyber security and IT.</p>	 <p><b>Sheridan Institute of Higher Education</b> sheridan.edu.au Pathway into arts, commerce and science.</p>
 <p><b>Keystone College of Business and Technology (KCBT)</b> kcbt.wa.edu.au Pathway into commerce, hospitality and marketing.</p>	 <p><b>National Institute of Technology (NIT Australia)</b> nitaustralia.edu.au Pathway into commerce, computer sciences, cyber security and IT.</p>	 <p><b>Phoenix Academy</b> phoenix.wa.edu.au Pathway into commerce.</p>	 <p><b>TAFE International Western Australia</b> tafeinternational.wa.edu.au Pathway into 20+ ECU courses.</p>	 <p><b>Academies Australasia Institute</b> academies.edu.au Pathway into commerce.</p>



## ENGLISH PATHWAYS

If you don't meet ECU's English competency requirements, we encourage you to consider studying at one of our pathway providers, where you will be able to receive a packaged offer, making it easier for you to obtain your student visa.

Visit [international.ecu.edu.au/entry](http://international.ecu.edu.au/entry) for more details.

### Required English Results

Pathway Provider	Minimum Undergraduate English Requirement*	Minimum Postgraduate English Requirement*
 <p><b>Edith Cowan College</b> <a href="http://edithcowancollege.edu.au">edithcowancollege.edu.au</a></p>	Successful completion of Academic English 4 (AE 4) with minimum attendance of 80 per cent	Successful completion of Academic English 5 (AE 5) with minimum attendance of 80 per cent
 <p><b>International Institute of Business and Technology</b> <a href="http://iibt.edu.au">iibt.edu.au</a></p>	Minimum score of B2+ with no band less than B2+ in Academic English IV	Minimum score of C1+ with no band less than B2+ in Academic English IV
 <p><b>Language Links</b> <a href="http://languagelinks.wa.edu.au">languagelinks.wa.edu.au</a></p>	Completion of the English for IELTS and Academic Purposes with minimum overall level Upper Intermediate B (B2 on the Common European Framework). Upper Intermediate B in all 4 macro skills (and meets Grammar/English in Use requirements for this level)	Completion of the English for IELTS and Academic Purposes with minimum overall level Upper Intermediate A (B2+ on the Common European Framework). Upper Intermediate A or B in all 4 macro skills (and meets Grammar/English in Use requirements for this level)
 <p><b>Perth International College of English (PICE)</b> <a href="http://pice.com.au">pice.com.au</a></p>	Achievement of PICE English Level 7 (Upper Intermediate B)	Achievement of PICE English Level 8 (Upper Intermediate A)
 <p><b>Phoenix Academy</b> <a href="http://phoenix.wa.edu.au">phoenix.wa.edu.au</a></p>	Overall CEFR B2+ with no band less than B2+	Overall CEFR C1 with no band less than B2+

\*Required score to get into ECU.



# EDITH COWAN COLLEGE

Edith Cowan College (ECC) is ECU's on-campus academic and English pathway provider. It is the only ECU pathway based on the ECU campuses. ECC offers ECU Pathway Programs for students who may not qualify for direct entry into an ECU degree program.

## ECC HIGHLIGHTS

- Enables you to gain direct entry to ECU.
- Located on ECU Joondalup and Mount Lawley campuses.
- Access to ECU libraries, eLabs, medical facilities, cafés, sport facilities, security service and much more.
- Single visa to cover your Diploma and degree at ECC and ECU.
- More individual classroom interaction to ensure you receive a high level of attention from your lecturers.
- Dedicated university lecturers and teaching quality assured by ECU.
- Accepts students under the age of 18.
- Study Tours and ELICOS Teacher Training available.
- ECC Joondalup campus has an official PTE (Pearson Test of English) testing centre.
- ECC is registered by the Tertiary Education Quality and Standards Agency (TEQSA).

**EDITH  
COWAN  
COLLEGE**  
AUSTRALIA

**Edith Cowan College**  
Building 80, 10 Injune Way  
Joondalup, Western Australia, 6027  
Phone: (61 8) 6279 1100  
Email: [info@ecc.edu.au](mailto:info@ecc.edu.au)

Visit [edithcowancollege.edu.au](http://edithcowancollege.edu.au) for more information.

## ACADEMIC UNDERGRADUATE PATHWAY TO ECU

Students have the following options at ECC to get into ECU:

**Diploma:** Your pathway into ECU 2nd year.

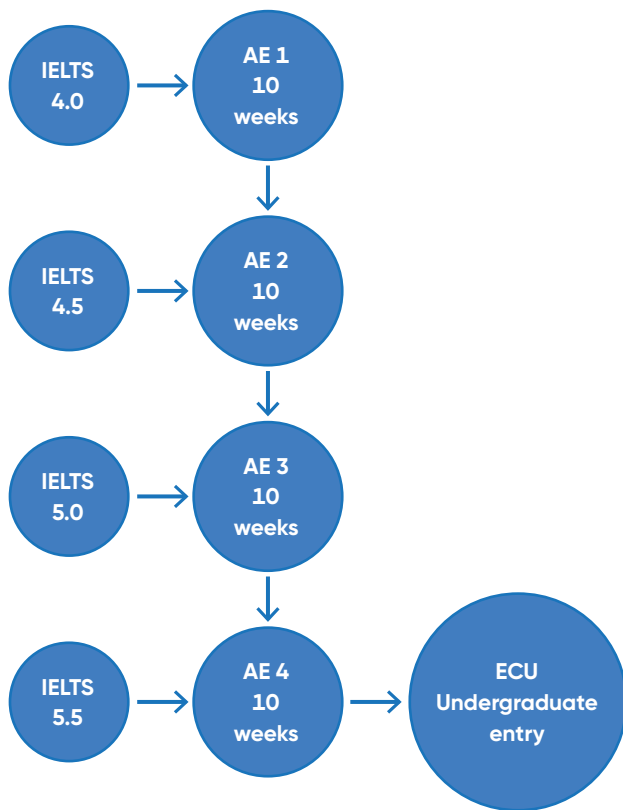
Students can commence their diplomas in Commerce, Communications and Creative Industries, Hotel Management, Computing/IT and Engineering Studies at ECC in February, June and October. ECC's Diploma of Health Science course includes ECU's service taught units, meaning that students can commence in February and July, in line with ECU's semesters.

**Foundation:** Your pathway into ECU 1st year.

The foundation program at ECC will bridge the gap between your high school studies and ECU undergraduate studies. With smaller classes and additional support, you will be ready for your undergraduate studies at ECU on completion of your ECC Foundation Program. The ECC Foundation Program gives you access to over 250 undergraduate courses from 8 schools: Arts & Humanities, Business & Law, Engineering & Technology, Medical & Health Sciences, Nursing & Midwifery, Science, Teacher Education, Western Australian Academy of Performing Arts. The Foundation Program has two intakes a year i.e. February and July for most courses.

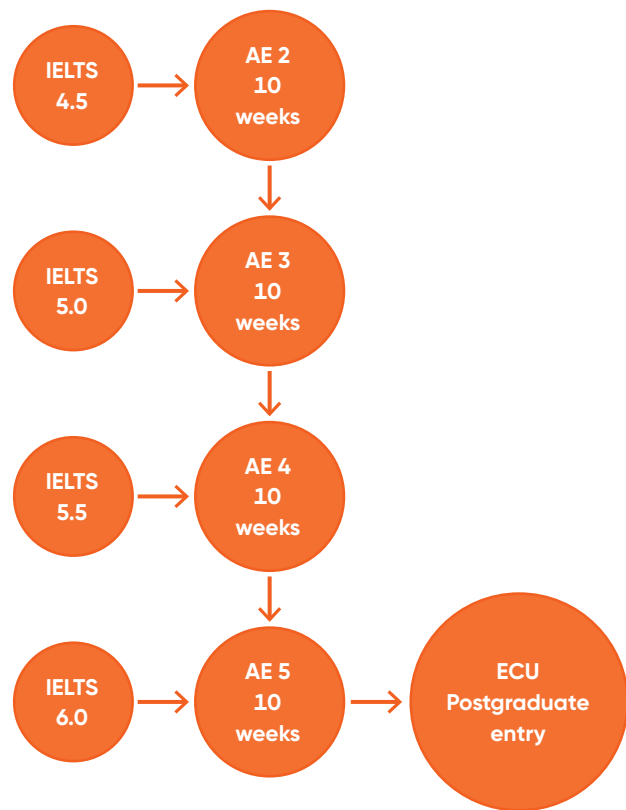
## UNDERGRADUATE ENGLISH PACKAGE GUIDE

### IELTS Score



## POSTGRADUATE ENGLISH PACKAGE GUIDE

### IELTS Score



## ACADEMIC POSTGRADUATE PATHWAY TO ECU

ECC's Postgraduate Qualifying Program (PQP) is a non-award program, designed for students who already have a tertiary qualification but have not qualified for direct entry into selected ECU Masters degrees in the School of Arts and Humanities, School of Business and Law and School of Science (Computing & Security).

This program leads into the following two year Masters degrees with one unit of advanced standing:

- Master of Business Administration International
- Master of Computer Science
- Master of Cyber Security
- Master of Finance and Banking<sup>#</sup>
- Master of Human Resource Management
- Master of International Hospitality Management
- Master of Marketing and Innovation Management
- Master of Management Information Systems
- Master of Professional Accounting<sup>#</sup>
- Master of Professional Communications
- Master of Project Management
- Master of Supply Chain and Logistics Management

<sup>#</sup>Advanced standing is not available for this course.

## ACADEMIC ENGLISH PATHWAY TO BOTH ECC AND ECU

ECC provides English language programs for people who do not meet the ECU English requirements and from non-English-speaking backgrounds.

The English language program at ECC offers direct entry pathways for international students wishing to undertake university study at ECU and elsewhere.

Students will be placed in the correct level according to their IELTS result (see above), and will be required to pass that level to move to the next level or commence their academic program.

### Program highlights

- Taught in 10-week blocks from beginner to advanced.
- Leads into Diploma and PQP courses at ECC and various degree programs at ECU.
- No further English testing is required at the end of the program (except for Nursing and other higher English requirement courses).
- Study with experienced teachers with 10+ years of academic excellence in Australia and abroad.
- 94% pass rate from ongoing assessment throughout the 10-week block.
- Located at ECU Mount Lawley campus, only 4.5km away from Perth CBD.

This program is taught on ECU's Mount Lawley Campus.

# SOCIAL LIFE AT ECU



## ECU STUDENT GUILD

ECU Student Guild is run by ECU students and provides academic, social and financial assistance.

The Guild organises regular social events on campus and supports the many and varied student clubs at ECU. Joining a club is a great way to meet new people and enhance your university experience.

They also run a second-hand bookshop with an excellent range of used textbooks. Best of all, Guild membership is free for all students. Visit [www.ecuguild.org.au](http://www.ecuguild.org.au) for more details.



## ECU'S INTERNATIONAL CAFE

Being an international student is an exciting opportunity – you get to build new friendships and amazing international contacts. But it can also be a little overwhelming.

ECU invites international students to come along and share a coffee and afternoon tea, while learning about living and studying in Australia at International Café.

Each week hear from international students who have been in your shoes. Discover tips for balancing study and life, and other fun information such as the best hidden spots around Perth.

You will also hear from different guest speakers each week about services and activities available to you.

This is a great opportunity to meet other new international students from across the globe and get to know some of your fellow students a little bit better. All over a coffee and bite to eat!



# OUR STUDY AREAS

At ECU, we group similar fields of work into eight diverse study areas that align with our teaching schools. All of our courses are industry-relevant and internationally-recognised and most are professionally-accredited.

## ARTS & HUMANITIES

We offer programs in arts, design, media, communications, psychology, criminology, and social change. Our flexible course structures allow students to access electives in many disciplines to encourage multi-skilling, and improve employment prospects.



## BUSINESS & LAW

Business and Law at ECU offers an exciting mix of courses and majors that combine the latest theory with practical experience, leading to a diverse choice of careers. Students can expect a practical experience and to learn essential employability skills to help them succeed in a variety of dynamic global business environments.

## ENGINEERING & TECHNOLOGY

ECU has been ranked in the top 175 universities in the world for Engineering by the Times Higher Education World University Rankings for 2022. Here, you'll study in some of the best-equipped, industry-grade engineering labs in Australia, with the opportunity to work on real-world projects and develop strong contacts through industry engagements, events and internships. With an ECU engineering degree, you'll graduate as a world-ready engineer, able to work globally and capable of meeting the challenges of the future.

## MEDICAL & HEALTH SCIENCES

Medical and Health Sciences offers exciting and diverse areas of study and some of ECU's world-leading research teams. Courses include biomedical science, health science, exercise and sports science, occupational therapy, paramedical science, speech pathology, nutrition and dietetics, and public health.

## NURSING & MIDWIFERY

Nursing and Midwifery at ECU provides students with access to state-of-the-art health and wellness facilities, including demonstration and clinical practice wards, health simulations that encourage scenario-based learning, and practical placements with a range of health providers. We have dedicated nursing courses as well as WA's only nursing and midwifery dual degree program.

## SCIENCE

ECU offers a range of courses in the areas of science, biological and environmental sciences, data science, bioinformatics, computing and security. ECU's research and teaching are world-class, with practical degrees that can lead to a variety of careers in fields such as marine and freshwater biology, conservation and wildlife biology, environmental management, physics, chemistry, mathematics, cyber security and horticulture.

## TEACHER EDUCATION

ECU has been at the forefront of teacher education for over 100 years and has a strong reputation for the quality of its graduates. The experienced academic team are world leaders in tertiary teaching in the area of teacher education and strive to find better ways to prepare quality teachers.



## WESTERN AUSTRALIAN ACADEMY OF PERFORMING ARTS

The Western Australian Academy of Performing Arts (WAAPA) at ECU is one of the world's leading performing arts academies. WAAPA is recognised nationally and internationally for the quality of its graduates. It provides the most extensive range of performing arts training in Australia – both on stage and behind the scenes.

# TEACHING AND LEARNING FACILITIES AT ECU

With state-of-the-art campus facilities that are linked to industry, ECU will help you find that competitive edge and become world ready. Here are some of the highlights:



Broadcasting Studio –  
Mount Lawley Campus

## ARTS AND HUMANITIES

ECU has made a major commitment to arts and humanities through investment in multimillion dollar facilities. The re-housing of the design, photography and media studios, and new broadcasting studios, along with the refurbishment of the visual art area, provides world-class facilities for our students.

## BUSINESS AND LAW

Business and Law students have access to purpose-built rooms to facilitate learning in a wide variety of disciplines, including the Digital Hub, SMART Lab, Centre for Business Development, Business Bureau, Tax Clinic, and the Law Moot Court. These facilities feature industry software and practices that prepare students for their future careers.



Moot Court



SMART Lab

## TEACHER EDUCATION

ECU's Teacher Education courses are renowned for their extensive professional practice experience in a range of schools and learning centres.

This practical experience is complemented by our teaching spaces, such as our design and technology room, designed to provide an authentic classroom experience.

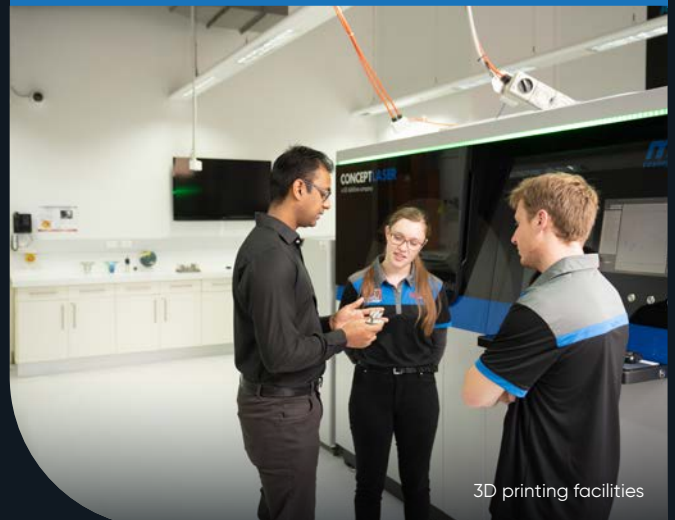


Design and Technology  
Education room

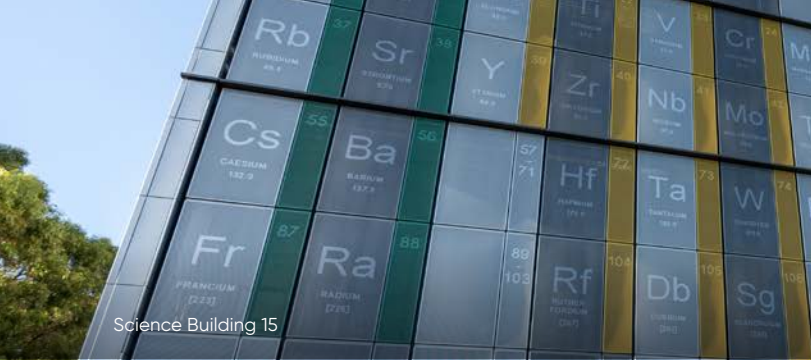
## ENGINEERING

Get practical experience in some of the most advanced engineering labs in Australia. Our labs are equipped with the latest technology, such as cutting-edge 3D printers, building-scale structural testing equipment, automated manufacturing, environmental remediation technologies, smart energy systems, and much more.

The ECU Advanced Manufacturing Hub is one of Western Australia's leading facilities in 3D printing technologies and advanced additive manufacturing.



3D printing facilities



Science Building 15

## SCIENCE

Students have access to labs equipped with the latest technology, from state-of-the-art mass spectrometry analytical equipment to the latest in computer technology, including the only multimillion dollar Security Operations Centre at an Australian university and a brand new Science building containing multiple super laboratories.

## MEDICAL AND HEALTH SCIENCES

The School of Medical and Health Sciences operates numerous working laboratories across its disciplines, featuring some of the most state-of-the-art equipment available to students in Australia. The most recent addition is the Superlabs, built to both PC1 and PC2 specifications to enable scientific and medical work to be conducted safely. You could be working with state-of-the-art plastinates from your first year of study!

Each Superlab is equipped with extensive AV equipment, including flat screens, pan zoom cameras, microphones and digital lab books, delivering an exciting student learning experience.



State-of-the-art Science lab



Cutting edge Biomedical lab



Unique Security Operations Centre

## NURSING AND MIDWIFERY

ECU's state-of-the-art health and wellness building incorporates high and low fidelity simulated practice wards for Nursing and Midwifery students to develop their clinical skills.

Students also undertake practical placements in healthcare facilities including leading hospitals. ECU's Mums Adopting Midwifery Students (MAMS) program also provides Midwifery students the opportunity to partner with pregnant woman to assist throughout their pregnancy all the way to the first few weeks after childbirth.



High fidelity practice ward



Only uni in Australia with a Spiegeltent

## WAAPA

Western Australian Academy of Performing Arts (WAAPA) at ECU has an impressive range of production, rehearsal, teaching and performance facilities and services available to support students and academics in their pursuit of excellence. As soon as you step foot inside WAAPA's facilities, it is impossible not to tune into the energy and vibrancy of this special place. ECU even has its own Spiegeltent ('The Edith') for hosting performances.

# ARTS & HUMANITIES

## LET CURIOSITY GET THE BETTER OF YOU.

Explore the complexities of the human mind, immerse yourself in a creative and engaging environment and make a contribution to improving people's quality of life.

ECU's School of Arts and Humanities offers a broad range of specialist and interdisciplinary courses in arts, design, media and communication, psychology, criminology and social change. Our flexible course structures allow open access to electives in all areas of the School to encourage multi-skilling, improve employment prospects and to promote a broader understanding of how the arts and humanities play a central role in the social and cultural fabric of our society.



For more information on Arts & Humanities courses, please visit:  
[ecuworldready.com.au/arts-and-humanities](http://ecuworldready.com.au/arts-and-humanities)



Learn more about the School of Arts and Humanities

### CAREERS:

- 2D & 3D Animator
- Artist
- Author
- Child Protection Worker
- Children Services Coordinator
- Cinematographer
- Clinical Psychologist
- Community Adviser
- Digital Media Manager
- Director
- Film Critic
- Film Director
- Gallery Curator
- Government Policy Adviser
- Graphic Designer
- Interior Designer
- Journalist
- Photographer
- Producer
- Public Relations Consultant
- Scene-of-Crime Technician
- Scriptwriter
- Sound Mixer
- Therapist
- Web Designer
- Youth Justice Officer
- Youth Welfare Worker



# UNIQUE MAJORS

Our courses are structured to enable you to choose from a wide range of majors. There are more than 25 to choose from depending on your course. Some of the unique options available include:

## HISTORICAL & POLITICAL STUDIES

Examine the ideas, structures and processes that drive society at the national and international level.



## GAMES & INTERACTIVE DESIGN

Gain skills in the design, scripting, development and usability of digital media products for information, entertainment and commerce.



## VISUAL & SPATIAL DESIGN

Prepare for an industry that encompasses the converging fields of graphic design, spatial design, service design, strategic design, and social design.



## FAMILY & CHILD SUPPORT

Equip yourself with the knowledge and skills of working in leadership positions with children, families and communities in a range of fields.



## MEDIA & CULTURAL STUDIES

Gain a strong sense of contemporary cultural awareness and media savvy with advanced communication and critical appraisal skills.



## CORRECTIONS

Provides a unique opportunity to gain valuable knowledge in the criminal justice system, with a focus on offender management.



## BROADCASTING & DIGITAL JOURNALISM

Inform, educate and entertain audiences. Learn in state-of-the-art radio and TV studios, explore smart phone journalism, record interviews and prepare news reports.



## PROFESSIONAL YOUTH WORK

Provides an opportunity to combine a youth work major with one of ten complementary areas of study including Aboriginal and Intercultural Studies, Addiction Studies and Event Management.



## SCREEN PRODUCTION

Learn skills in concept development and scriptwriting, production management and directing, camera and editing to produce creative and engaging content for the screen.



## WORLD-CLASS FACILITIES

ECU has made a major commitment to arts & humanities through investment in multimillion dollar facilities. The re-housing of the design, photography and media studios, and new broadcasting studios, along with the refurbishment of the visual art areas, provides world-class facilities for staff, students and researchers.

## LINKING GRADUATES WITH INDUSTRY

Flexible courses, combined with our focus on community projects and industry placements, increases employment prospects and will equip our students with the skills needed to make a difference in people's lives. Through our close links with industry professionals we ensure our teaching and courses are always relevant and up-to-date. Our students have been highly successful, both nationally and internationally, in gaining recognition through awards, competitions and employment in a rapidly growing and increasingly competitive market.

## PROFESSIONAL ACCREDITATIONS AND ALLIANCES

We offer courses that are professionally accredited, approved, or recognised by professional bodies, such as:

- Australian Association of Social Workers (AASW)
- Australian Community Workers Association (ACWA)
- Australian Psychology Accreditation Council
- CILECT International Association of Film and Television Schools
- Design Institute of Australia
- International Advertising Association (IAA)
- Psychotherapy and Counselling Federation of Australia (PACFA)
- Public Relations Institute of Australia (PRIA)

# BUSINESS & LAW

## THE WORLD NEEDS LEADERS LIKE NEVER BEFORE.

**At ECU's School of Business and Law, you will receive the latest theoretical knowledge, practical experience and essential employability skills to help you succeed in a variety of complex, competitive and dynamic global business environments.**

We are specialists with almost 70% of our staff and 50% of our students from countries outside Australia. We understand and value the enriched cross-cultural learning experience that this brings to the School.

We offer an exciting mix of courses and majors developed in consultation with industry.

You'll be taught by experienced academics who are passionate teachers and who genuinely care about their students' success. In fact, ECU rates as one of the leading universities in Australia for the quality of the international student experience.

ECU boasts state-of-the-art facilities and work integrated learning opportunities so you'll graduate with workplace experience valued nationally, and internationally.

So get set for a rewarding and successful career with a degree from ECU's School of Business and Law.



**For more information on Business & Law courses, please visit:**  
[ecuworldready.com.au/  
business-and-law](http://ecuworldready.com.au/business-and-law)



**Learn more about the School of Business and Law**

### **CAREERS:**

- Accountant
- Bank Manager
- Brand Manager
- Environmental Planner
- Event Manager
- Financial Analyst
- Hotel Manager
- Human Resource Manager
- In-House Counsel
- Investment Adviser
- Lawyer
- Management Consultant
- Managing Director
- Marketing Manager
- Project Manager
- Resort Manager
- Social Media Manager
- Sport Development Manager
- Sport Manager
- Strategic Planner
- Trade Manager



SMART Lab

## WHY STUDY COMMERCE AT ECU?

- 1 All students are guaranteed real-world learning experiences through Work Integrated Learning.
- 2 Access real-time global financial market data using Thomson Reuters Eikon Workspace software in the SMART Lab.
- 3 Tap into the latest social media channels in the Digital Hub using Salesforce Social Studio.
- 4 Collaborate in the Centre for Business Development and our brand new Business Bureau, or put theory into practice in our ECU Tax Clinic working with tax professionals.



Moot Court

## WHY STUDY LAW AT ECU?

- 1 The number one WA university for undergraduate full-time employment and median salary in Law and Paralegal Studies (Good Universities Guide, 2022).
- 2 Professionally accredited by the Legal Practice Board of Western Australia (LPBWA).
- 3 Access to our state-of-the-art Moot Court which simulates a real-world legal environment.
- 4 Real-world experience opportunities under the supervision of legal practitioners with the on-campus ECU Tax Clinic and the Northern Suburbs Community Legal Centre.

## ECU RANKED AMONG THE BEST



### Business

Top WA university for Undergraduate Overall Educational Experience in Business and Management (Good Universities Guide, 2022).

### Law

Top WA university for Undergraduate Overall Educational Experience in Law and Paralegal Studies (Good Universities Guide, 2022).



### Business

Top 250 university in the world for Business and Economic studies (THE Subject Rankings, 2022).



### Business

Australia's top public university for Teaching Quality and Skills Development in undergraduate Business and Management (QILT, 2021).

### Law

WA's top university for Skills Development in undergraduate Law and Paralegal Studies (QILT, 2021).



### Hospitality and Tourism Management

Top 30 in the ShanghaiRanking's 2022 global rankings for Hospitality & Tourism Management.

# ENGINEERING & TECHNOLOGY

## FOR AN ENGINEERING CAREER THAT'S BUILT TO LAST.

ECU is ranked in the top 175 universities in the world for Engineering by the Times Higher Education World University Rankings for 2022.

Here, you'll study in some of the best-equipped, industry-grade engineering labs in Australia, with the opportunity to work on real-world projects and develop strong contacts through industry engagements, events and internships.

With an ECU engineering degree, you'll graduate as a world-ready engineer, able to work globally and capable of meeting the challenges of the future.



For more information on Engineering & Technology courses, please visit: [ecuworldready.com.au/engineering](https://ecuworldready.com.au/engineering)



Learn more about the School of Engineering



ECU ranked 151-175 for Engineering (Times Higher Education 2022)

### CAREERS:

- Automotive Engineer
- Aviation Operations Controller
- Chemical Engineer
- Civil Engineer
- Communications Engineer
- Computer Systems Engineer
- Computer Systems Technologist
- Design Engineer
- Electrical Engineer
- Electronics Engineer
- Embedded Systems Engineer
- Environmental Engineer
- Flight Planner
- Instrumentation Engineer
- Mechanical Engineer
- Mechatronics Engineer
- Oil and Gas Engineer
- Petroleum Engineer
- Process Control Engineer
- Renewable Energy Engineer
- Structural Engineer

# 10 REASONS TO CHOOSE ENGINEERING AT ECU

**1 GLOBAL RANKINGS**  
ECU is ranked in the world's top 175 universities for Engineering (Times Higher Education 2022).

**2 WORLD-CLASS FACILITIES**  
Get practical experience in some of the most advanced engineering labs in Australia. Our labs are equipped with the latest technology, such as cutting edge 3D printers, building-scale structural testing equipment, automated manufacturing, environmental remediation technologies, smart energy systems, and much more.

**3 TOP IN WA FOR ENGINEERING**  
ECU has been ranked the top university in Western Australia for undergraduate Engineering education, across all six indicators (QILT SES results 2020).

**4 INDUSTRY CONNECTIONS**  
Courses are developed in close consultation with industry and your study will include a work placement of up to 12 weeks.

**5 PROFESSIONALLY ACCREDITED**  
Our courses are accredited by Engineers Australia.

**6 GLOBAL RECOGNITION**  
You can work wherever you choose because our accredited courses are globally recognised under the Washington Accord.

**7 CHOICE**  
Choose from over 20 Engineering and Technology courses.

**8 ENGINEERING STUDENT CLUBS**  
Expand your horizons by joining dynamic student clubs like the Climate Change Combat Engineering Society, Women in Engineering, Edith Cowan Aviators, ECU Robotics, Engineers Without Borders, Edith Cowan University Racing, and more.

**9 SCHOLARSHIPS**  
Scholarships can help you realise your ambitions by paying for fees, text books and living expenses. Visit [ecu.edu.au/international-scholarships](http://ecu.edu.au/international-scholarships) to find out more.

**10 RANGE OF ADMISSION PATHWAYS**  
Our Technology courses provide a pathway to study in the field of engineering if you don't meet the prerequisites, or wish to graduate as an Engineering Technologist instead of a Professional Engineer.



**WA UNIVERSITY  
ENGINEERING**

Undergraduate Overall Educational Experience, Good Universities Guide 2022

# MEDICAL & HEALTH SCIENCES

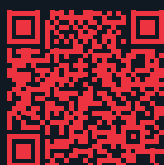
## STUDY LIKE SOMEONE'S LIFE DEPENDS ON IT.

If you have a passion to make a difference to the health and lives of others, ECU's School of Medical and Health Sciences has the course for you.

We teach an exciting and diverse range of disciplines, including; biomedical science, exercise & sports science, health science, occupational health & safety, occupational therapy, paramedicine, public health and speech pathology.

As a student, you'll have access to state-of-the-art facilities and specialised laboratories where you'll put theory into practice. Our courses also provide a basis for honours and postgraduate studies, laying the groundwork for a future career in health and medicine.

If you are already qualified in any of these fields, our postgraduate courses offer opportunities for career and professional development.



For more information on Medical & Health Sciences courses, please visit:  
[ecuworlready.com.au/medical-and-health-sciences](https://ecuworlready.com.au/medical-and-health-sciences)



Learn more about the School of Medical and Health Sciences

### CAREERS:

- Accredited Exercise Physiologist
- Dietitian
- Clinical Scientist
- Environmental Health Officer
- Exercise Scientist
- Football Performance Analyst
- Health Education Officer
- Health Officer
- Health Promotion Practitioner
- Laboratory Manager
- Medical Scientist
- Microbiology Technician
- Neuromuscular Therapist
- Nutritionist
- Occupational Therapist
- Occupational Health & Safety Manager
- Paramedic
- Speech Pathologist
- Sports Medicine Trainer
- Sport Physiologist
- Strength & Conditioning Coach

# UNDERGRAD HEALTH SCIENCE MAJORS AT ECU

Make a positive contribution to enhancing the health of communities. The following majors are available to study under the Bachelor of Health Science:



## Addiction Studies

Understand how to reduce the harm associated with excessive behaviour, with a focus on alcohol and other drug use.



## Nutrition Bioscience

Delve into understanding nutrition with a focus on human physiology and nutritional biochemistry, providing a pathway to postgraduate studies in Dietetics.



## Health Promotion

Promote preventive health and wellness through increasing people's ability to make healthy choices, and by reducing health inequalities in the community.



## Occupational & Environmental Health & Safety

Ensure local communities have safe and healthy food and water, and environments that promote positive health outcomes.



## Nutrition

Apply science-based knowledge about nutrients and nutritional status throughout the life cycle. Explore community nutrition, food habits and trends and the relationship between nutrition and public health.



## Occupational Safety & Health

Working with people to maintain and improve safety, health and welfare at work.

## GET HANDS-ON WITH ACCREDITED, PRACTICAL COURSES

In our professionally-accredited undergraduate courses in Occupational Therapy, Speech Pathology, Exercise Science and Rehabilitation, Paramedical Science, and postgraduate Nutrition and Dietetics, you'll have access to well-equipped laboratories with specialised equipment and simulated environments. Before attending clinical placements, you'll use these facilities to practice hands-on skills. Our staff have strong clinical backgrounds, so they know how to prepare you for entry into the health system.



## CLINICAL TRAINING OPPORTUNITIES FOR ALLIED HEALTH STUDENTS

The Joondalup Community Clinical School is a purpose built clinical training facility located at Joondalup Health Campus. Students provide services to the community including Nutrition and Dietetics, Exercise Physiology, Speech Pathology, and Occupational Therapy.

The student led Joondalup Community Clinical School benefits the community with the provision of high quality, inter-professional, evidence based care to a wide range of clients to assist with the management of chronic disease, mental illness, neurological conditions and general health.

The clinic provides opportunities for students to contribute to client assessments and interventions.

# NURSING & MIDWIFERY

## DIFFERENT PROBLEMS. DIFFERENT SOLUTIONS. DIFFERENT DAY.

ECU has a reputation for producing some of the highest quality nursing and midwifery graduates in Western Australia, and is recognised as a top 100 nursing program worldwide.

We have dedicated nursing and midwifery courses, including WA's only nursing and midwifery dual degree program. These courses offer an innovative and broad study approach for scenario-based learning. Students are provided with access to state-of-the-art health and wellness facilities featuring simulated practice areas and practicum placements with a range of healthcare providers.



For more information on Nursing & Midwifery courses, please visit:  
[ecuworldready.com.au/nursing-and-midwifery](https://ecuworldready.com.au/nursing-and-midwifery)



Learn more about the School of Nursing and Midwifery

### CAREERS:

- Registered Nurse
- Registered Midwife
- Children and Young People's Nurse
- Critical Care Nurse
- Mental Health Nurse
- Regional Nurse
- Aged Care Nurse
- Rural Nurse
- Remote Nurse



# WHY STUDY NURSING AND MIDWIFERY AT ECU?

## WA'S ONLY DUAL NURSING & MIDWIFERY DEGREE



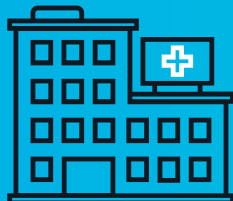
## NURSING PROGRAM WORLDWIDE

QS World University Subject Ranking 2022.

### PROFESSIONALLY ACCREDITED COURSES



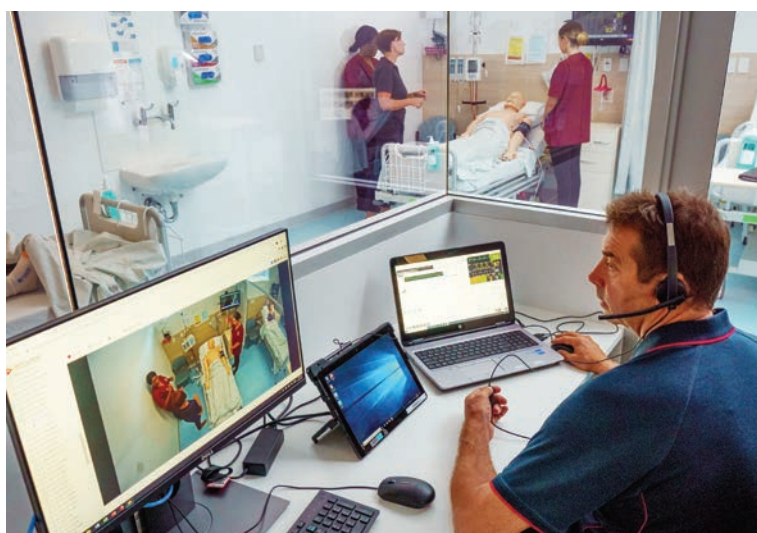
### STATE-OF-THE-ART FACILITIES



OVER 160 PLACEMENT PROVIDERS



ABOVE WORLD AVERAGE PERFORMANCE IN RESEARCH



### OUTSTANDING HEALTH AND WELLNESS FACILITIES

Our state-of-the-art health and wellness building incorporates high and low fidelity simulated practice wards for both nursing and midwifery that provide a safe, authentic environment for clinical skills development. These provide students with the opportunity for experiential hands-on practice to learn skills in a variety of simulated scenarios, designed to increase the competence and confidence of students. The wards include 66 beds on the Joondalup Campus and 23 beds at ECU South West (Bunbury) that simulate the real world healthcare environment, and dedicated midwifery practice areas.

### PRACTICAL PLACEMENT PARTNERSHIP PROGRAMS

Our partnership programs offer nursing and midwifery students the opportunity to undertake the majority of their practical placements in one health service, allowing them access to helpful resources, as well as networking opportunities. These unique partnership programs are available at a range of healthcare facilities, including Sir Charles Gairdner Hospital, Osborne Park Hospital and North Metropolitan Mental Health Service.



# SCIENCE

## STUDY WHAT MATTERS.

**When it comes to studying science, computing and security, ECU's teaching and research facilities are world-class.**

You'll find a range of practical degrees that can lead to distinctly different careers in fields such as biology, bioinformatics, cyber security, counter terrorism security, physics, information technology, environmental science and management, chemistry, mathematics, data science, horticulture and more.

Our flexible courses and world-class teaching, combined with our Work Integrated Learning program and close industry links, will provide you with endless possibilities in Australia and internationally.



For more information on  
Science courses, please visit:  
[ecuworldready.com.au/science](https://ecuworldready.com.au/science)



Learn more about the  
School of Science

### CAREERS:

- Analytical Chemist
- Aquatic Scientist
- Biodiversity Manager
- Bioinformatician
- Computer Programmer
- Computing Project Leader
- Counter Terrorism Consultant
- Cyber Security Analyst
- Data Scientist
- Digital Forensic Investigator
- Environmental Management Officer
- Games Developer
- Intelligence Profiler
- Marine Biologist
- Natural Resource Manager
- Nature Conservationist
- Network Security Engineer
- Scientist
- Security & Risk Analyst
- Software Designer
- Sustainability Officer
- Systems Architects
- Web Developer

# WHY CHOOSE SCIENCE AT ECU?

## CHOICE

A range of courses and majors across diverse fields. You'll have the option to study degrees focusing on a specific area, or broader degrees which cover multiple areas within a single discipline.



## INDUSTRY AND CAREER NETWORKING

Students get the opportunity to meet and network with prospective employers, industry representatives and professionals at the Science Annual Careers Events.



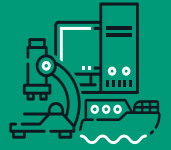
## WORK INTEGRATED LEARNING

Students receive real-world experience through placements, internships, industry projects and volunteering.



## INDUSTRY STANDARD FACILITIES

Students have access to labs equipped with the latest technology, from state-of-the-art mass spectrometry analytical equipment to the latest in computer technology, including the only multimillion dollar Security Operations Centre at an Australian university and a brand new Science building containing multiple super laboratories.



## INTERNATIONAL REPUTATION

ECU is the only Australian university recognised as an International Cybersecurity Center of Excellence.



Our staff are internationally recognised, and one of our staff is a member of the INTERPOL Global Cybercrime Expert Group.

## COMPUTING AND SECURITY AT ECU

ECU is recognised as a leader in cyber security. Our computing and security courses offer a range of majors to choose from, studying in world-class facilities. Our cyber security research and education team is one of the best in Australia and highly respected globally.

ECU plays a key role in the \$139 million Cyber Security Cooperative Research Centre, which has its Head Office at the ECU Joondalup Campus.

## SCIENCE AT ECU

ECU offers an exciting Bachelor of Science degree covering a broad range of disciplines that give students the opportunity to specialise in a major discipline of study and multi-skill via the selection of a secondary minor discipline of study, creating a unique skillset to increase their career options.

Home to between 600,000 and 700,000 species, Australia's rich biodiversity offers immense opportunities to ECU Science graduates. Studying in the field, or in our advanced labs, ECU students gain important real world skills that help them hit the ground running when they graduate.

## RANKINGS

In the 2022 Good Universities Guide, ECU received a 5 Star rating for teaching quality. This rating has now been achieved for 15 years in a row. ECU has also received the following rankings for its science and computing disciplines:



**IN AUSTRALIA**  
**COMPUTING & INFORMATION SYSTEMS**  
Undergraduate Overall Educational Experience,  
Good Universities Guide 2022



**WA UNIVERSITY**  
**ENVIRONMENTAL STUDIES**  
Undergraduate Overall Educational  
Experience, Good Universities Guide 2022



**WA UNIVERSITY**  
**SCIENCE & MATHEMATICS**  
Undergraduate Overall Educational  
Experience, Good Universities Guide 2022

# TEACHER EDUCATION

## BECOME THE TEACHER THEY WILL ALWAYS REMEMBER.

The teachers of tomorrow choose ECU's School of Education because we're national leaders in education and education research, producing graduates who are both classroom-ready and world-ready.

Our experienced team is passionate about education and strives to find better ways to help you become a teacher – through pioneering research and outstanding community-based partnerships with schools.

For qualified teachers, our Master of Education courses can help advance your career by building your leadership skills while allowing you to specialise in a particular aspect of teaching.

If you want to be part of the next generation of outstanding teachers and make a real difference to the lives of young people, our Teacher Education courses will start you on your journey.



For more information on  
Teacher Education courses, please visit:  
[ecuworldready.com.au/teacher-education](https://ecuworldready.com.au/teacher-education)



Learn more about the  
School of Education

### CAREERS:

- Art Teacher
- Biological Science Teacher
- Chemistry Teacher
- Child Care Professional
- Computing Teacher
- Design & Technology Teacher
- Digital Media Teacher
- Education Officer
- English Teacher
- High School Teacher
- Home Economics Teacher
- Kindergarten Teacher
- Music Teacher
- Pedagogical Leader
- Primary School Teacher
- Principal
- Social Science Teacher

# WHY STUDY TEACHER EDUCATION AT ECU?

## NATIONALLY ACCREDITED COURSES

All ECU teacher education courses are accredited by the Teacher Registration Board of Western Australia (TRBWA). All graduates are eligible to apply for registration with TRBWA. Students need to pass the Literacy and Numeracy Test for Initial Teacher Education Students (LANTITE) to graduate.

Our Bachelor of Education (Early Childhood Studies) and Master of Teaching (Early Childhood) courses are accredited by both the TRBWA and the Australian Children's Education and Care Authority (ACECQA).



## REAL WORLD LEARNING IN SCHOOLS AND EARLY LEARNING CENTRES

Our courses in early childhood, primary and secondary teacher education are renowned for their extensive professional experience, making our graduates job-ready and preferred by many employers. Your study at ECU will be embedded in authentic classroom settings with real students and real teaching. With over 1,000 partnership schools and early childhood learning centres, your study will focus on the needs of schools of today and will be supported through classroom-based experiences. This ensures you'll be prepared for your very own classroom when you graduate.



# QILT

Quality Indicators for Learning and Teaching

## TOP WA PUBLIC UNI FOR TEACHER EDUCATION

In the latest QILT survey results, ECU was ranked Western Australia's top public university for undergraduate Teacher Education across all six survey indicators. Our program conforms with the Federal Government requirements for nationally accredited initial teacher education programs.



## IN AUSTRALIA TEACHER EDUCATION

Undergraduate Overall Educational Experience, Good Universities Guide 2022



## DIVERSITY IN EDUCATION

Our ongoing relationships and established partnerships with public and private schools and pre-school centres, in both local and regional areas of Western Australia, will allow you to gain experience with children with diverse learning abilities and from differing economic, social, ethnic and educational circumstances.

# WAAPA

## IF ALL THE WORLD'S A STAGE, THIS ONE IS YOURS.

The Western Australian Academy of Performing Arts (WAAPA) at ECU is one of the world's most celebrated performing arts academies.

WAAPA is recognised nationally and internationally for the quality of its graduates. It provides the most comprehensive range of performing arts training in Australia – both on stage and behind the scenes. Course entry is competitive, with an audition and/or an interview required as part of the application process.



For more information on WAAPA courses, please visit:  
[ecuworldready.com.au/waapa](http://ecuworldready.com.au/waapa)



Learn more about WAAPA

### CAREERS:

- Actor
- Artist
- Arts Marketing Manager
- Choreographer
- Chorister
- Company Manager
- Composer
- Dancer
- Designer for Stage/Screen
- Director
- Dramaturg
- Entertainer
- Music Artist
- Musician
- Performance Artist
- Performer
- Playwright
- Producer
- Production Manager
- Singer
- Songwriter

# THE WONDERFUL WORLD OF WAAPA

## STAR GRADUATES

WAAPA graduates are in high demand and excel in their chosen professions, making a significant contribution to the performing arts and allied industries. Highly celebrated graduates include actors Hugh Jackman, Frances O'Connor, Rachael Maza and Jai Courtney; comedians Jim Jeffries and Tim Minchin; opera singers Emma Matthews, Duncan Rock and Rachelle Durkin; music theatre stars Lisa McCune, Eddie Perfect and Lucy Durack; musicians Troy Roberts, Linda May Han Oh, Chris Dragon, Jessica Gethin and Meg Mac. WAAPA's Arts & Cultural Management, and Production & Design professionals can also be found working in arts organisations and companies around the world.

## CULTURAL COLLABORATION WITH LEADING LOCALS

WAAPA is proud to be working in close collaboration with many of Western Australia's leading cultural organisations, including Perth Theatre Trust, Black Swan State Theatre, West Australian Ballet, West Australian Symphony Orchestra, West Australian Opera, Perth Symphony Orchestra, Yirra Yaakin Theatre Company, The Blue Room Theatre, Spare Parts Puppet Theatre, Perth Festival, Fringe World Festival and Co: 3 Contemporary Dance Company.

## WHY THE FUTURE OF MUSIC IS COLLABORATIVE

In 2021, WAAPA's Dr Jamie Oehlers, Associate Dean of Music, and his colleagues embarked on a project to reimagine tertiary music education for the needs of modern musicians. The result is the launch of a new Bachelor of Music degree in 2022. "I think that the model for tertiary music education, especially in Australia, is still primarily built around the music industry in the '70s or '80s," says Jamie. "Over the last decade, we have really needed to adapt to the portfolio career model, which sees musicians managing their own careers and creating their own content. This new course will give them the best chance at continuing in a career in music. The future of the arts is collaborative, where genre lines are blurred and different art forms interact. Specialist skills are needed to facilitate these collaborations and this course develops these skills in all students."

## INTERVIEWS, AUDITIONS AND FOLIOS

All WAAPA courses require applicants to complete an interview and/or audition, or submit a folio of work, as part of the selection process. Visit [ecuworldready.com.au/waapa](http://ecuworldready.com.au/waapa) for more specific information about interviews, auditions and folios.



'Crazy For You'  
Photo by Stephen Heath

# RESEARCH

## CREATE NEW KNOWLEDGE AND NEW BEGINNINGS.

ECU has a strong focus on conducting and translating research that has social, health, economic, environmental and cultural impact.

As a candidate conducting a research degree at ECU you will be supported by an engaged, experienced and knowledgeable supervisory team. In addition, ECU offers a vibrant research community fostering collaboration and engagement with peers, industry and other university partners. This and other professional development and networking opportunities will allow you to advance your career within your chosen field.



For more information on  
Research courses, please visit:  
[ecuworldready.com.au/research](https://ecuworldready.com.au/research)

---

### WORLD-CLASS RESEARCH

ECU conducts world-class research that makes a difference, focusing on people, partnerships and results. As part of the vibrant community at ECU, our researchers help to transform lives. Our four key research themes include:

**Health** – Prevention, detection and management of disease and injury

**Society and Culture** – Impacting and supporting social change through ensuring diversity, creativity, cultural identity, education, personal and organisational success and social justice

**Securing Digital Futures** – Enabling a safe, secure, productive and enterprising digital environment

**Natural and Built Environments** – Understanding, harnessing, building and protecting environments for sustaining people, place and planet.

Visit [ecuworldclass.com](https://ecuworldclass.com) for more information about the range of world-class research projects being undertaken by ECU researchers.



# RESEARCH AT ECU

## RESEARCH SUPPORT

We are fully committed to the research student experience and we offer a range of innovative and successful support programs:

- An orientation program and events to help you get started.
- An extensive free online and face-to-face research training program to help you develop new research and professional skills.
- Special seminars with guest presenters from business and industry groups.
- Opportunities to network with other researchers.
- Support for planning your career beyond your research degree.
- Opportunities to collaborate with industry to advance your career (e.g. internships, industry-supported projects and so on).

### SOAR CENTRE

The SOAR Centre (Support – Opportunities – Advice – Resources) is a free, peer-to-peer support service open to Higher Degree by Research and Honours students.

The SOAR Centre provides support and information with a focus on a wide range of research skills training and career development.



## OUR RESEARCH PROFILE

Edith Cowan University (ECU) conducts world-class research that makes a difference, focusing on people, partnerships and results.

As part of the vibrant community at ECU, our researchers help to transform lives and change the world for the better.

Examples of our ground-breaking research include:

- Early melanoma detection through a blood test
- Exercise as medicine for cancer patients
- Metal filtration to improve wastewater quality
- Biometric security system for smartphones
- Seagrass sequestration as an indicator for climate change
- Full blood count analysis for detecting Haemochromatosis

You can explore these projects and more at [ecuworldclass.com](http://ecuworldclass.com)



# 2023 WORLD READY SCHOLARSHIPS

ECU has a range of World Ready Scholarships that are offered exclusively to international students commencing study in 2023.

Our World Ready Scholarships provide students with financial assistance as they gain a world-class education at a university renowned for its teaching quality.

Academic scholarship eligibility is automatically assessed upon submitting your application to study at ECU.

A separate application is required for our accommodation bursary.

Visit [ecu.edu.au/scholarships/offers](https://ecu.edu.au/scholarships/offers) for full details on each scholarship and the applicable terms and conditions.



## IMPORTANT DATES IN 2023

SEMESTER 1, 2023		SEMESTER 2, 2023	
Orientation	13 – 17 February	Orientation	17 – 21 July
Semester Commences	20 February	Semester Commences	24 July
Mid Semester Break	10 – 14 April	Mid Semester Break	25 – 29 September
Study Week	29 May – 2 June	Study Week	30 October – 3 November
Review and Examination	5 – 16 June	Review and Examination	6 – 17 November

### ORIENTATION

Orientation happens two weeks before the start of each semester and it's a great way for new students to adjust to uni life.

You'll get to meet teaching staff and new students, find your way around campus and understand where to go for our many student support services.



Visit [ecu.edu.au/future-students/applying/important-dates](https://ecu.edu.au/future-students/applying/important-dates) for more details on our application dates.

# FACILITIES, SERVICES & SUPPORT

## RESOURCES

- Fully-equipped modern libraries
- e-labs available 24/7
- Free Wi-Fi
- Hairdresser (JO)
- ATMs



## STUDENT HUB

- Course information & advice
- Enrolment assistance
- Advice on how to resume a course following deferral/discontinuation
- Advice on extension of time
- Graduation eligibility

## FOOD

- Cafés and other food outlets



## HEALTH

- Medical Centres (JO/ML)
- Free Counselling service
- Fully-equipped sports, recreation & fitness centres (JO/ML)
- Mini-gym & playing courts (SW)

## SAFETY

- 24/7 security service
- Well-lit pathways
- Emergency phones
- 3271 parking bays across campuses
- Night security escort
- Security app



## FAMILY

- Childcare
- Parenting rooms
- Crèche
- Kids Holiday Program (JO/ML)



## SOCIAL

- Student Guild
- Clubs and societies
- University games
- Taverns (JO/ML)



## LEARNING

- Academic Mentoring
- Learning Advisers
- Career, Volunteering, Mentoring & Leadership Services
- Equity, Diversity & Disability Services
- Study Abroad & Exchange Program
- Kurungkurl Katitjin (Centre for Indigenous Australian Education & Research)
- LGBTIQA+ supportive environment



JO – Joondalup ML – Mount Lawley SW – ECU South West (Bunbury)

## EQUITY, DIVERSITY & DISABILITY

ECU's Equity, Diversity and Disability Service (EDDS) supports students whose studies may be affected by a range of circumstances including a medical condition or disability, either their own or that of a family member that they care for, cultural or religious practices and other situations on a case by case basis. EDDS staff will work with you to identify reasonable adjustments and provide ongoing support through an individual Learning and Assessment Plan (LAP). You can make an appointment to have an obligation-free, confidential chat with an EDDS Officer by contacting the service at [studentequity@ecu.edu.au](mailto:studentequity@ecu.edu.au)

**DON'T JUST  
CHANGE  
YOUR FUTURE,  
CHOOSE IT.**

**BECOME  
WORLD READY  
AT ECU.**

**Contact**

P 134 328

P (61 8) 6304 0000 (Outside Australia)

E [futurestudy@ecu.edu.au](mailto:futurestudy@ecu.edu.au)


W [ecuworlready.com.au/international](http://ecuworlready.com.au/international)

**Find us at**

 [ECUJourney](#)

 [edithcowanuni](#)

 [edithcowanuniversity](#)

 [school/edith-cowan-university](#)

 [edithcowanuniversity](#)

**WORLD READY** —

Every effort has been made to ensure that the information in this publication is correct at the time of production. The information is subject to change from time to time and the University requests the right to add, vary or discontinue courses and impose limitations on enrolment in any course. The publication constitutes an expression of interest and is not to be taken as a firm offer or understanding. This publication is intended for Australian citizens and permanent residents only. Some information contained in this publication may not be applicable to international students.

**GREENING ECU:** Edith Cowan University is committed to reducing the environmental impact associated with its operations by conducting its activities in a socially and environmentally responsible manner. This includes implementing strategies and technologies that minimise waste of resources and demonstrate environmentally sensitive development, innovation and continuous improvement.

CRICOS Provider No. 00279B | RTO Code 4756

TEQSA ID PRV12160, Australian University

key2creative\_42387B\_08/22